



SABYASACHI

for

nilaya

furnishing by  asianpaints

HAZARIBAGH
LINEN



Sabyasachi x Nilaya

What I design is the result of myriad inspirations – whether it's fashion or homes. And creating designs for Heartland was like stepping into a familiar world, textured by a variety of experiences, acquisitions, memories and stories that have stayed with me, knowingly and unknowingly: the skillfully painted fabrics that were born along the Coromandel Coast; embroideries from an ancient world; well-remembered motifs and patterns that continue to enchant; old-world Calcutta with its fading luxury; the traditions of miniaturists from colonial-era Murshidabad.

The Thar, Makhmal and Soofah collections that comprise Heartland celebrate the beauty of classical motifs reinterpreted and hand painted by artists from the Sabyasachi Art Foundation. They find expression through a reimagining of traditional patterns and a distinctive palette of colours I have evolved over time. These carefully crafted fabrics can transform spaces and perhaps your perspective as well. The patterns, designs and motifs that make up the fabric collections of Heartland is an endeavour to make this journey of transformation uncommon and unforgettable – as it should be.

After all, at the heart of every home is the story of the people who inhabit it, make it and shape it just the way they like it. Layer it with well-loved elements and their distinct styles. Heartland, I hope, serves as a reminder of the beauty that still remains, and endures, in an uncertain world.

The image shows the front cover of a book. The cover is a dark, muted green color with a fine, woven texture. It features a repeating pattern of stylized floral or foliate motifs, possibly embossed or printed in a slightly darker shade of green. Scattered across the surface are numerous small, irregular pieces of gold leaf, which catch the light and add a sense of luxury and age. The title 'HAZARIBAGH' is printed in a large, bold, serif font in a bright yellow-gold color, centered horizontally. Below it, the word 'LINEN' is printed in a smaller, similar serif font, also centered.

HAZARIBAGH
LINEN



SNL002



SNL003



SNL001



KLS001



KLS002



KLS003

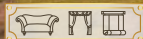




KLS004



KML001



KML002



KML003



KML004



PCL001





PCL002



PCL003



PCL004



VTLS01



VTLS02



VTLS03







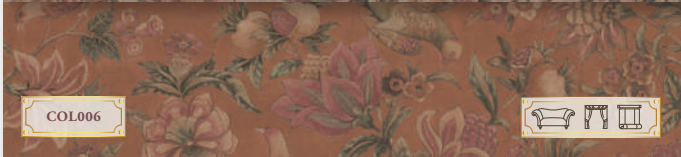
GMT002



GMT003



COL002



COL006



COL005



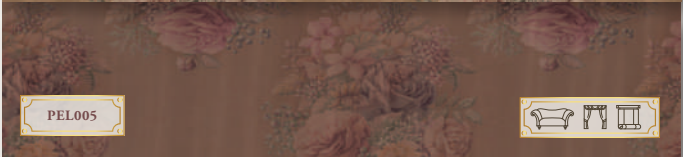
COL003







PEL004



PEL005



PEL006



PEL007



PEL008



PEL009





SHANTINIKETAN LINEN VELVET | SNL002



GSM	MARTINDALE	COMPOSITION	V. REPEAT	H. REPEAT	HSN CODE
420	20000	100% Linen	78.2	67.7	53091910

BACK



SHANTINIKETAN LINEN VELVET | SNL003



GSM	MARTINDALE	COMPOSITION	V. REPEAT	H. REPEAT	HSN CODE
420	20000	100% Linen	78.2	67.7	53091910

BACK

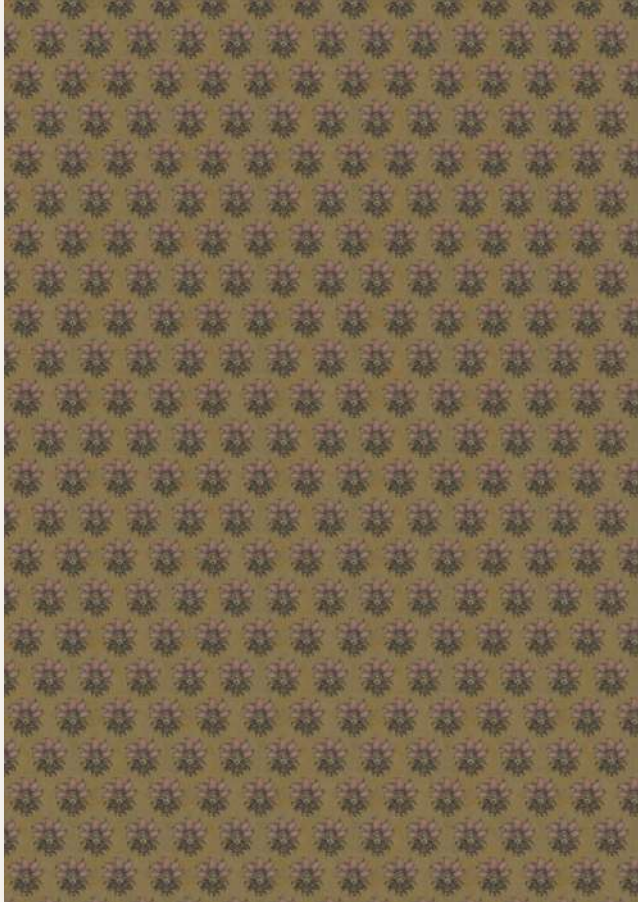


SHANTINIKETAN LINEN VELVET | SNL001



GSM	MARTINDALE	COMPOSITION	V. REPEAT	H. REPEAT	HSN CODE
420	20000	100% Linen	78.2	67.7	53091910

BACK

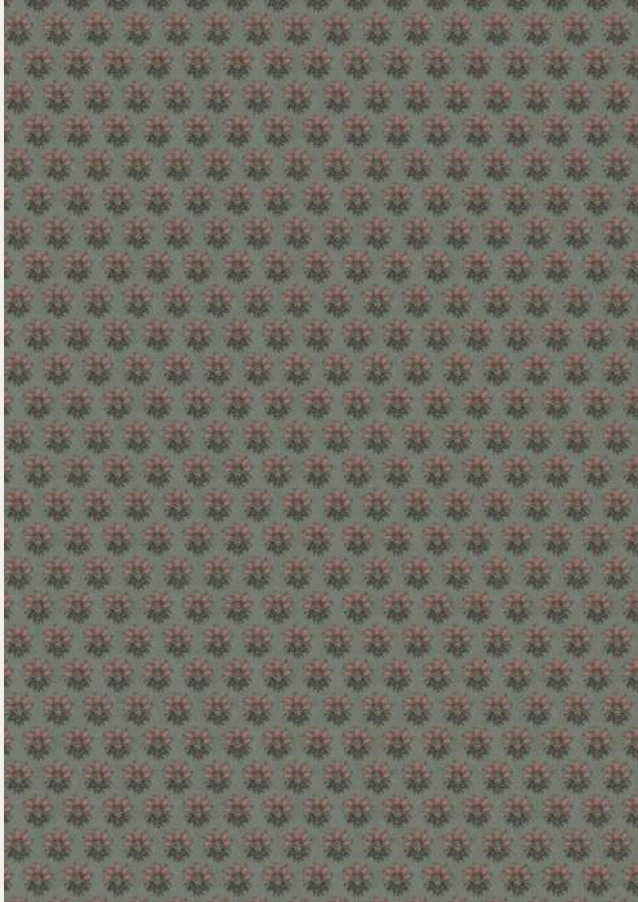


KAMALIKA LINEN (S) | KLS001



GSM	MARTINDALE	COMPOSITION	V. REPEAT	H. REPEAT	HSN CODE
220	15000	100% Linen	10.2	5.7	53091910

BACK



KAMALIKA LINEN (S) | KLS002



GSM	MARTINDALE	COMPOSITION	V. REPEAT	H. REPEAT	HSN CODE
220	15000	100% Linen	10.2	5.7	53091910

BACK

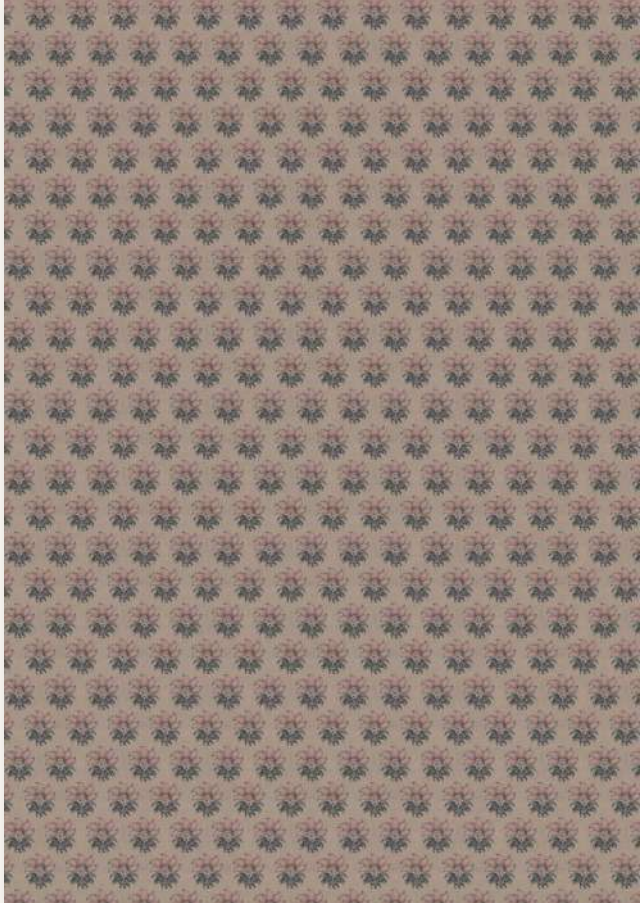


KAMALIKA LINEN (S) | KLS003



GSM	MARTINDALE	COMPOSITION	V. REPEAT	H. REPEAT	HSN CODE
220	15000	100% Linen	10.2	5.7	53091910

BACK



KAMALIKA LINEN (S) | KLS004



GSM	MARTINDALE	COMPOSITION	V. REPEAT	H. REPEAT	HSN CODE
220	15000	100% Linen	10.2	5.7	53091910

BACK



KAMALIKA LINEN | KML001



GSM	MARTINDALE	COMPOSITION	V. REPEAT	H. REPEAT	HSN CODE
420	20000	100% Linen	19.4	11.5	53091910

BACK

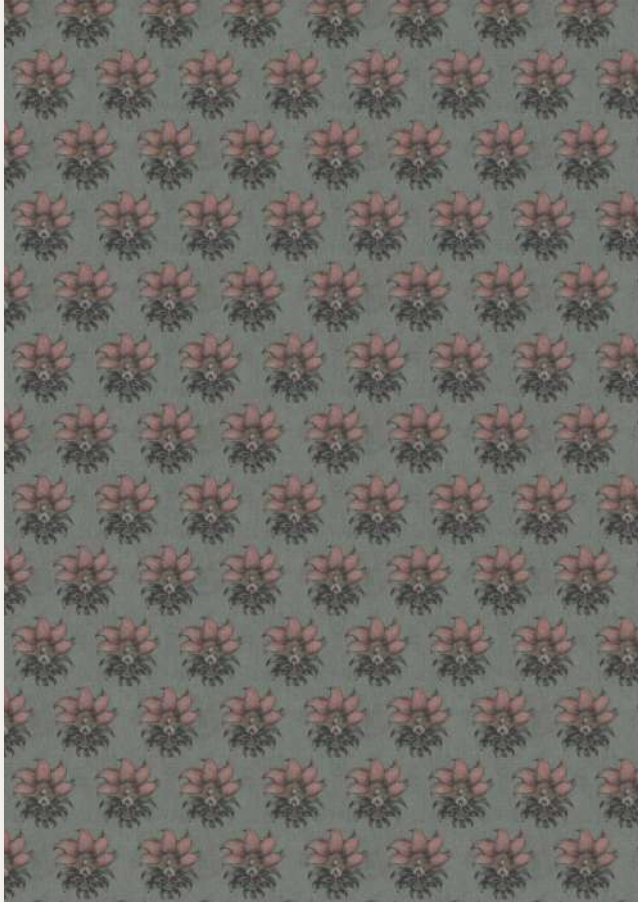


KAMALIKA LINEN | KML002



GSM	MARTINDALE	COMPOSITION	V. REPEAT	H. REPEAT	HSN CODE
420	20000	100% Linen	19.4	11.5	53091910

BACK

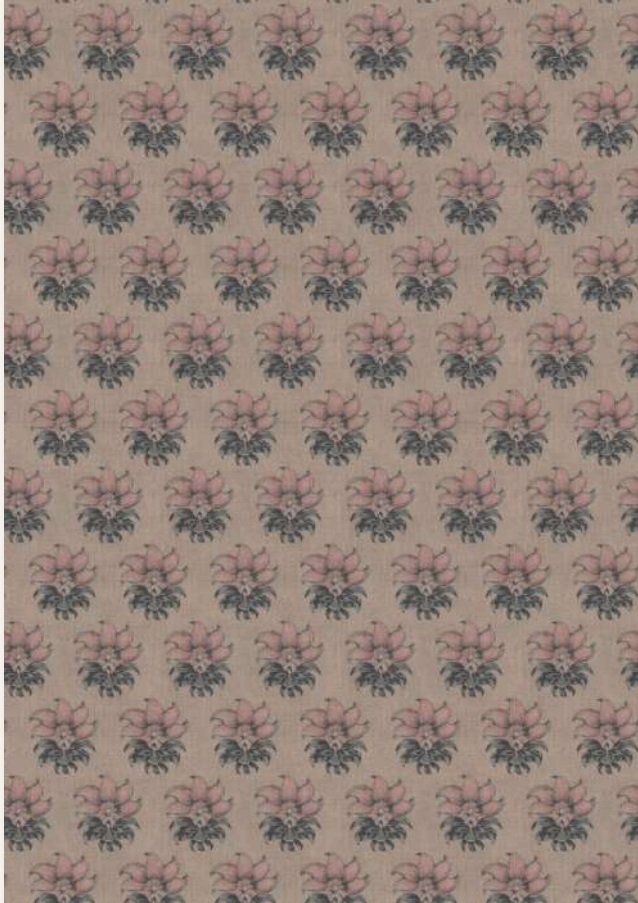


KAMALIKA LINEN | KML003



GSM	MARTINDALE	COMPOSITION	V. REPEAT	H. REPEAT	HSN CODE
420	20000	100% Linen	19.4	11.5	53091910

BACK

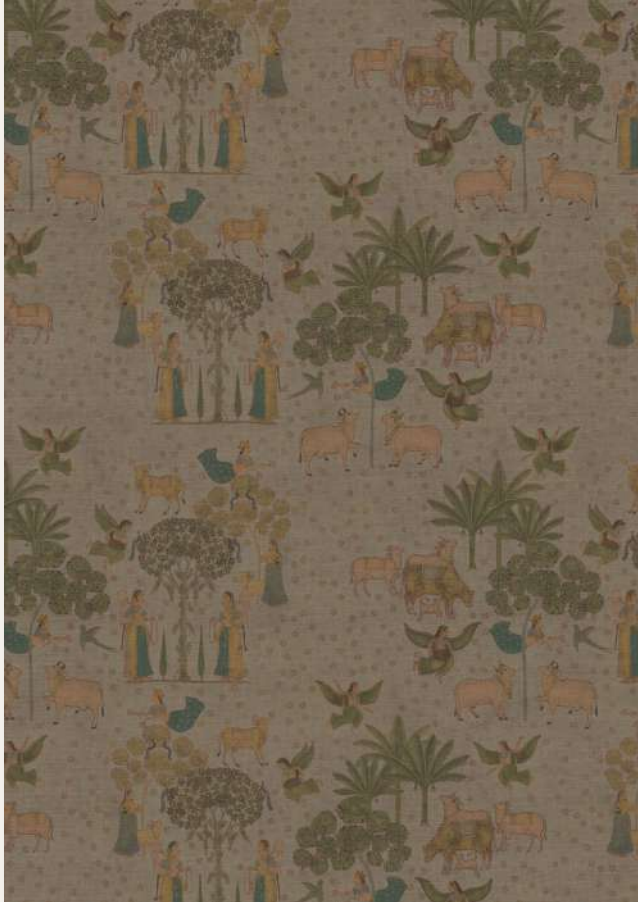


KAMALIKA LINEN | KML004



GSM	MARTINDALE	COMPOSITION	V. REPEAT	H. REPEAT	HSN CODE
420	20000	100% Linen	19.4	11.5	53091910

BACK



PICHWAI LINEN | PCL001



GSM	MARTINDALE	COMPOSITION	V. REPEAT	H. REPEAT	HSN CODE
420	20000	100% Linen	71	67.7	53091910

BACK

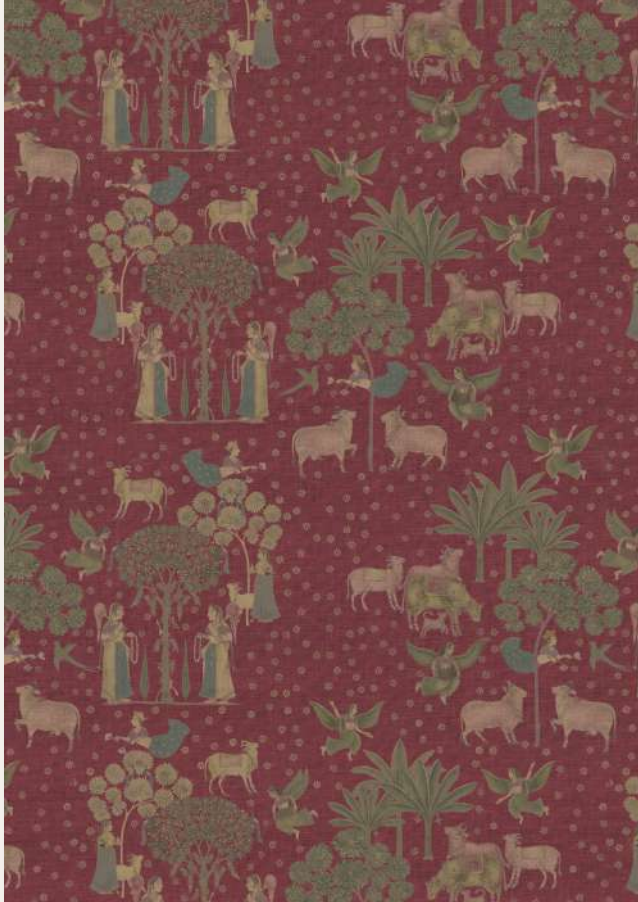


PICHWAI LINEN | PCL002



GSM	MARTINDALE	COMPOSITION	V. REPEAT	H. REPEAT	HSN CODE
420	20000	100% Linen	71	67.7	53091910

BACK

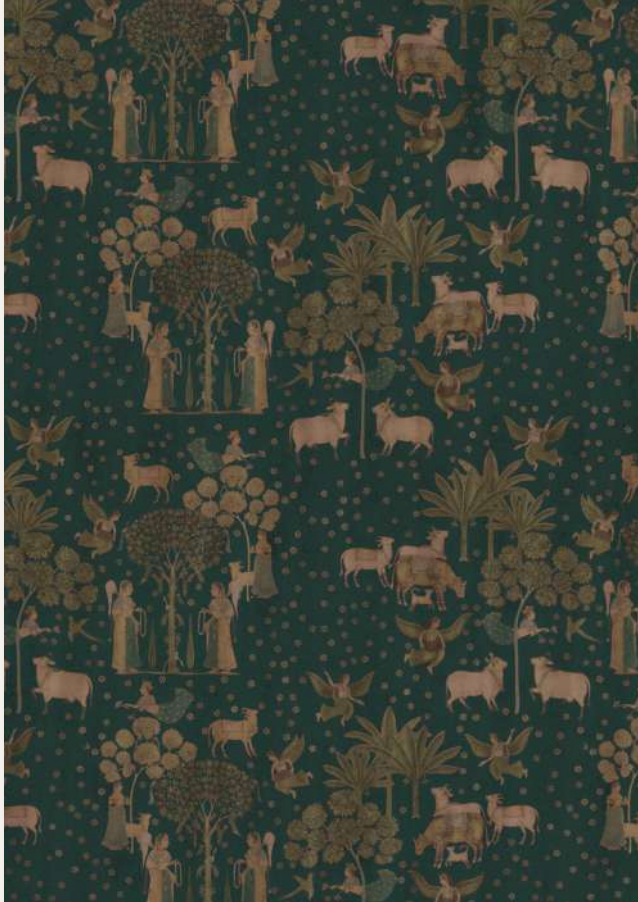


PICHWAI LINEN | PCL003



GSM	MARTINDALE	COMPOSITION	V. REPEAT	H. REPEAT	HSN CODE
420	20000	100% Linen	71	67.7	53091910

BACK

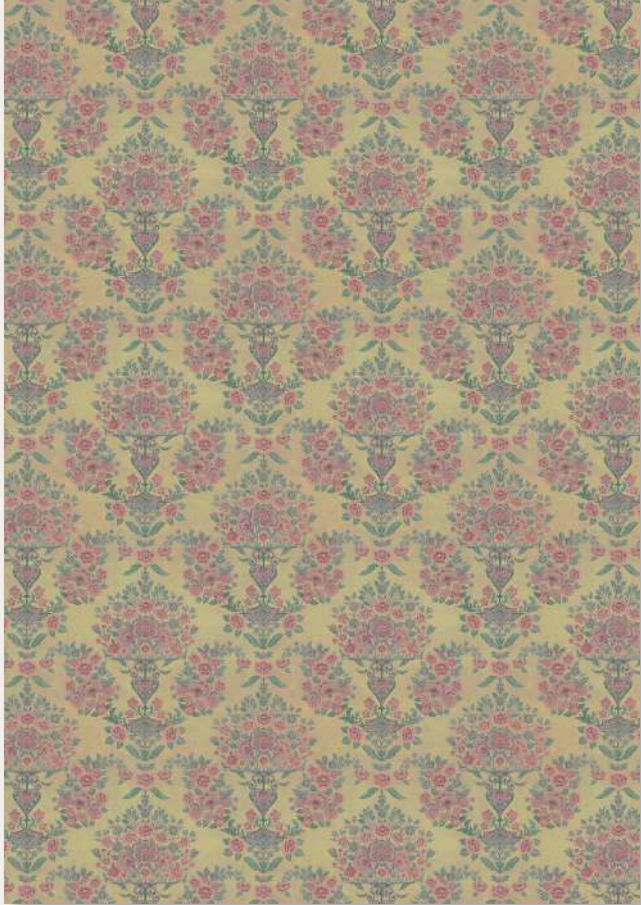


PICHWAI LINEN | PCL004



GSM	MARTINDALE	COMPOSITION	V. REPEAT	H. REPEAT	HSN CODE
420	20000	100% Linen	71	67.7	53091910

BACK

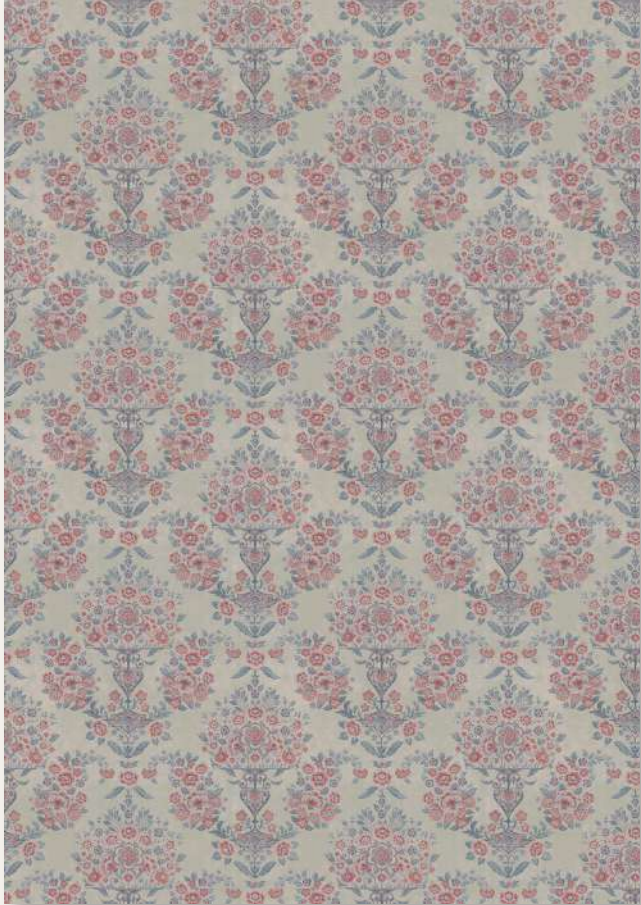


VATIKA LINEN (S) | VTLS01



GSM	MARTINDALE	COMPOSITION	V. REPEAT	H. REPEAT	HSN CODE
420	20000	100% Linen	64	67.5	53091910

BACK

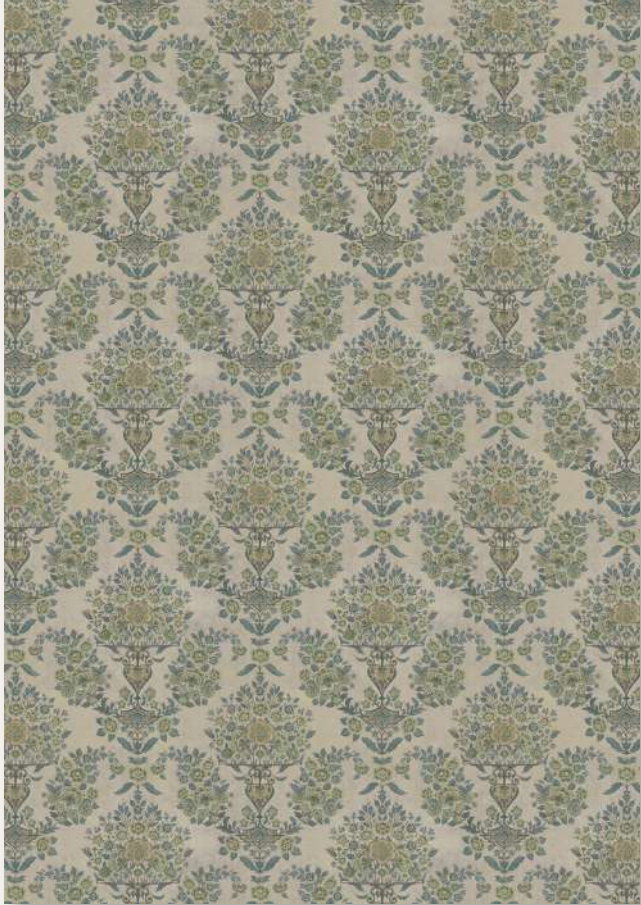


VATIKA LINEN (S) | VTLS02



GSM	MARTINDALE	COMPOSITION	V. REPEAT	H. REPEAT	HSN CODE
420	20000	100% Linen	64	67.5	53091910

BACK

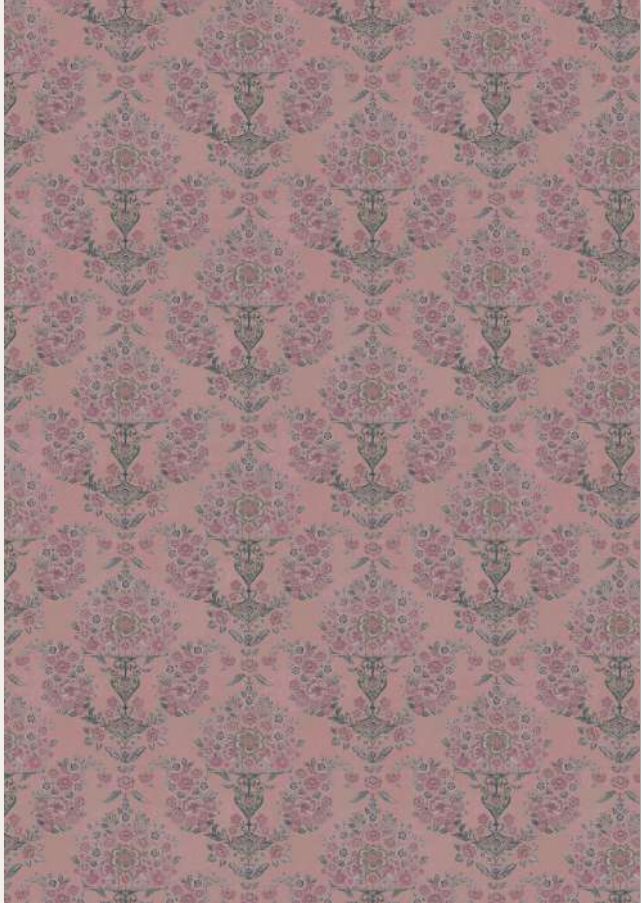


VATIKA LINEN (S) | VTLS03



GSM	MARTINDALE	COMPOSITION	V. REPEAT	H. REPEAT	HSN CODE
420	20000	100% Linen	64	67.5	53091910

BACK



VATIKA LINEN (S) | VTLS04



GSM	MARTINDALE	COMPOSITION	V. REPEAT	H. REPEAT	HSN CODE
420	20000	100% Linen	64	67.5	53091910

BACK

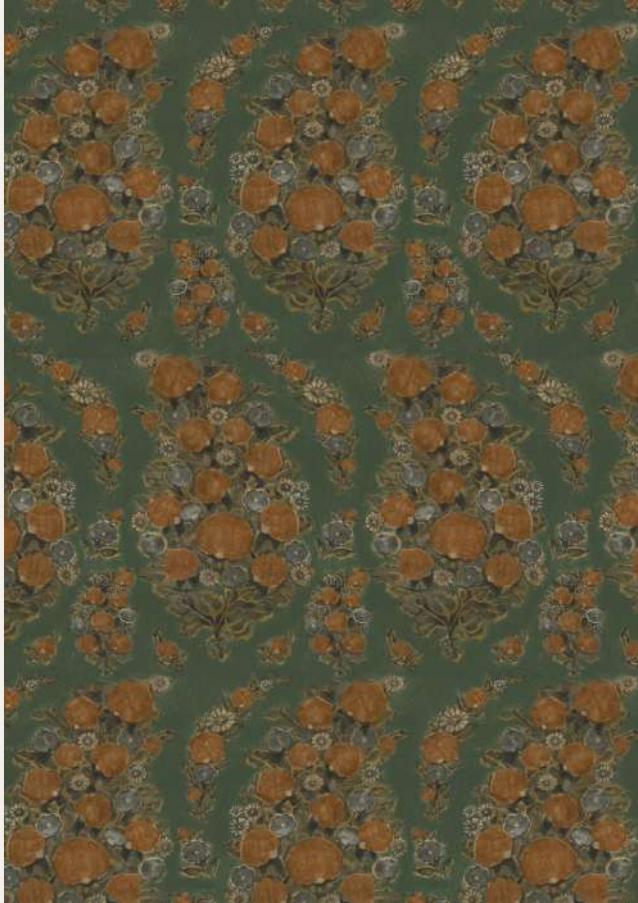


PAHALGAM PAISLEY | PAH003



GSM	MARTINDALE	COMPOSITION	V. REPEAT	H. REPEAT	HSN CODE
420	20000	100% Linen	94.5	34	53091910

BACK



PAHALGAM PAISLEY | PAH004



GSM	MARTINDALE	COMPOSITION	V. REPEAT	H. REPEAT	HSN CODE
420	20000	100% Linen	94.5	34	53091910

BACK

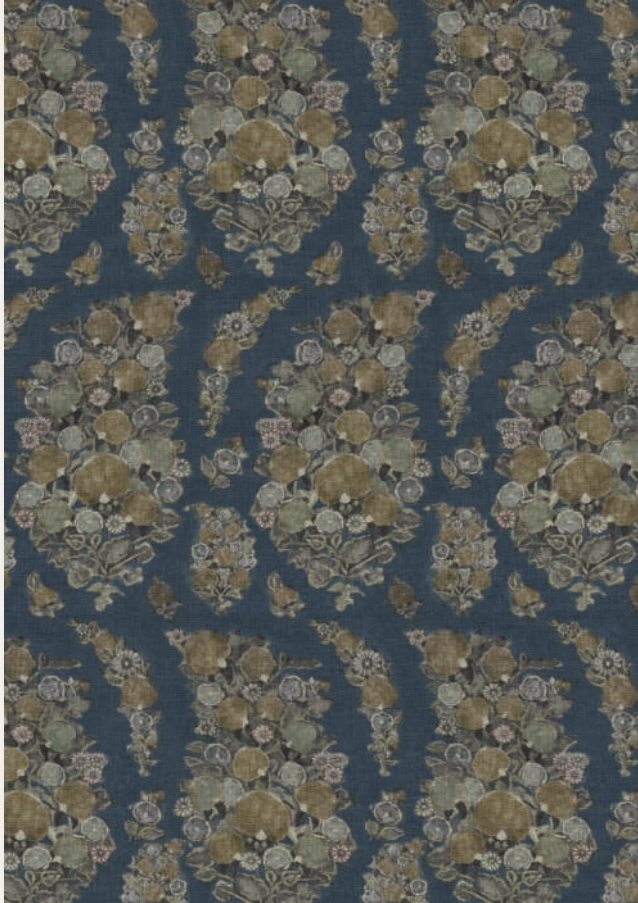


PAHALGAM PAISLEY | PAH002



GSM	MARTINDALE	COMPOSITION	V. REPEAT	H. REPEAT	HSN CODE
420	20000	100% Linen	94.5	34	53091910

BACK

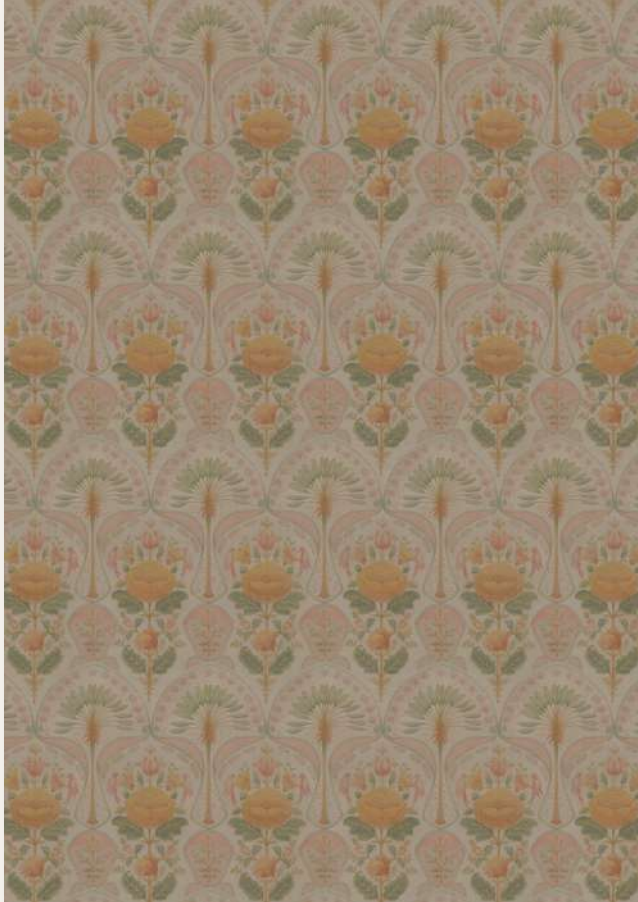


PAHALGAM PAISLEY | PAH001



GSM	MARTINDALE	COMPOSITION	V. REPEAT	H. REPEAT	HSN CODE
420	20000	100% Linen	94.5	34	53091910

BACK



MOGHOL TRAVELLER | GMT001



GSM	MARTINDALE	COMPOSITION	V. REPEAT	H. REPEAT	HSN CODE
220	15000	100% Linen	34.5	17	53091910

BACK



MOGHOL TRAVELLER | GMT002



GSM	MARTINDALE	COMPOSITION	V. REPEAT	H. REPEAT	HSN CODE
220	15000	100% Linen	34.5	17	53091910

BACK



MOGHOL TRAVELLER | GMT003



GSM	MARTINDALE	COMPOSITION	V. REPEAT	H. REPEAT	HSN CODE
220	15000	100% Linen	34.5	17	53091910

BACK



COROMANDEL LINEN | COL002



GSM	MARTINDALE	COMPOSITION	V. REPEAT	H. REPEAT	HSN CODE
420	20000	100% Linen	69.2	135.5	53091910

BACK



COROMANDEL LINEN | COL006



GSM	MARTINDALE	COMPOSITION	V. REPEAT	H. REPEAT	HSN CODE
420	20000	100% Linen	69.2	135.5	53091910

BACK



COROMANDEL LINEN | COL005



GSM	MARTINDALE	COMPOSITION	V. REPEAT	H. REPEAT	HSN CODE
420	20000	100% Linen	69.2	135.5	53091910

BACK



COROMANDEL LINEN | COL003



GSM	MARTINDALE	COMPOSITION	V. REPEAT	H. REPEAT	HSN CODE
420	20000	100% Linen	69.2	135.5	53091910

BACK



COROMANDEL LINEN | COL001



GSM	MARTINDALE	COMPOSITION	V. REPEAT	H. REPEAT	HSN CODE
420	20000	100% Linen	69.2	135.5	53091910

BACK



COROMANDEL LINEN | COL004



GSM	MARTINDALE	COMPOSITION	V. REPEAT	H. REPEAT	HSN CODE
420	20000	100% Linen	69.2	135.5	53091910

BACK



GULBAG LINEN | GBL001



GSM	MARTINDALE	COMPOSITION	V. REPEAT	H. REPEAT	HSN CODE
420	20000	100% Linen	79.8	69.5	53091910

BACK



GULBAG LINEN | GBL002



GSM	MARTINDALE	COMPOSITION	V. REPEAT	H. REPEAT	HSN CODE
420	20000	100% Linen	79.8	69.5	53091910

BACK



GULBAG LINEN | GBL003



GSM	MARTINDALE	COMPOSITION	V. REPEAT	H. REPEAT	HSN CODE
420	20000	100% Linen	79.8	69.5	53091910

BACK



GULBAG LINEN | GBL004



GSM	MARTINDALE	COMPOSITION	V. REPEAT	H. REPEAT	HSN CODE
420	20000	100% Linen	79.8	69.5	53091910

BACK



PERSIS LINEN | PEL004



GSM	MARTINDALE	COMPOSITION	V. REPEAT	H. REPEAT	HSN CODE
242	30000	100% Linen	75.5	66	53091910

BACK



PERSIS LINEN | PEL005



GSM	MARTINDALE	COMPOSITION	V. REPEAT	H. REPEAT	HSN CODE
242	30000	100% Linen	75.5	66	53091910

BACK



PERSIS LINEN | PEL006



GSM	MARTINDALE	COMPOSITION	V. REPEAT	H. REPEAT	HSN CODE
242	30000	100% Linen	75.5	66	53091910

BACK



PERSIS LINEN | PEL007



GSM	MARTINDALE	COMPOSITION	V. REPEAT	H. REPEAT	HSN CODE
242	30000	100% Linen	75.5	66	53091910





PERSIS LINEN | PEL008



GSM	MARTINDALE	COMPOSITION	V. REPEAT	H. REPEAT	HSN CODE
242	30000	100% Linen	75.5	66	53091910

BACK



PERSIS LINEN | PEL009

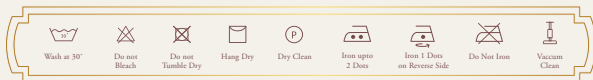


GSM	MARTINDALE	COMPOSITION	V. REPEAT	H. REPEAT	HSN CODE
242	30000	100% Linen	75.5	66	53091910

BACK

DESIGN	COROMANDEL LINEN	GULBAG LINEN	KAMALIKA LINEN(L)	KAMALIKA LINEN(S)
WIDTH	140.5	140.5	142	142
COMPOSITION	100% Linen	100% Linen	100% Linen	100% Linen
HSN CODE	58012790	53091910	53091910	58012790
GSM	420	420	420	220
HORIZONTAL REPEAT	135.5	69.5	11.5	5.7
VERTICAL REPEAT	69.2	79.8	19.4	10.2
MARTINDALE	20000	20000	20000	15000
WASH CARE				
END USE				

WASH CARE

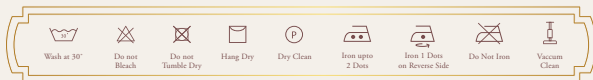


END USE



DESIGN	MOGHOL TRAVELLER	PAHALGAM PAISLEY	PERSIS LINEN	PICHWAI LINEN
WIDTH	142	140	138	140
COMPOSITION	100% Linen	100% Linen	100% Linen	100% Linen
HSN CODE	53091910	53091910	53091920	53091910
GSM	220	420	242	420
HORIZONTAL REPEAT	17	34	66	67.7
VERTICAL REPEAT	34.5	94.5	75.5	71
MARTINDALE	15000	20000	30000	20000
WASH CARE				
END USE				

WASH CARE

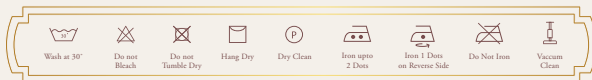


END USE



DESIGN	SHANTINIKETAN LINEN	VATIKA LINEN(S)
WIDTH	140	140.5
COMPOSITION	100% Linen	100% Linen
HSN CODE	53091910	53091910
GSM	420	420
HORIZONTAL REPEAT	67.7	67.5
VERTICAL REPEAT	78.2	64
MARTINDALE	20000	20000
WASH CARE		
END USE		

WASH CARE



END USE



DESIGN	RRP (Without GST)	GST	RRP (With GST)
COROMANDEL LINEN	7000	350	7350
GULBAG LINEN	7000	350	7350
KAMALIKA LINEN(L)	7000	350	7350
KAMALIKA LINEN(S)	7000	350	7350
MOGHOL TRAVELLER	7000	300	7350
PAHALGAM PAISLEY	7000	350	7350
PERSIS LINEN	6800	340	7140
PICHWAI LINEN	7000	350	7350
SHANTINIKETAN LINEN	7000	350	7350
VATIKA LINEN(S)	7000	350	7350

