

# APEX CREATEX

Textures for Exterior Spaces





## Exterior Textures That Mesmerize

You get only one chance to make your first impression and so do the exteriors of your homes.

Well, now you can transform this unexplored space with Apex Createx Exterior Textures that will not only leave you spellbound with mesmerizing designs but also leave an everlasting impression.

So, why wait? Let's start transforming your exteriors, one wall at a time. Let's make your home beautiful.



Createx Dholpur - Brick Pattern  
Apex Ultima  
Topcoat 1 - Steel Grey (0643)  
Topcoat 2 - Antique White (0940)  
Grooves - Frosted Chocolate (8654)

## Entrance wall

Everyone loves compliments, especially when they come knocking at your door. And when the first wall of your house itself can put you in limelight, what more can you ask for?

Go ahead, transform your entrance wall with these warm and inviting textures that are crafted to instill a new charm in your entrance.



Tile Guard Clear Matt  
 Topcoat 1 - Sandstone (3211) - Colourwash  
 Topcoat 2 - Herbal Pack (8602) - Colourwash



Creutex Roller Finish - Diagonal Pattern



Tile Guard Clear Matt  
 Topcoat 1 - Sandstone (3211) - Colourwash  
 Topcoat 2 - Herbal Pack (8602) - Colourwash



Tile Guard Clear Matt  
 Topcoat 1 - Wrought Iron (8439) - Colourwash  
 Topcoat 2 - Frosted Chocolate (8654) - Colourwash



Tile Guard Clear Matt  
 Topcoat 1 - Rose Meadows (9406) - Colourwash  
 Topcoat 2 - Frosted Chocolate (8654) - Colourwash



Tile Guard Clear Matt  
 Topcoat 1 - Runaway Grey (9459) - Colourwash  
 Topcoat 2 - Platinum Disc (8297) - Colourwash





Apex Ultima  
Winter Moon (8258)



Apex Ultima  
Winter Moon (8258)



Apex Ultima  
Beige - N (0302)



Apex Ultima  
Basecoat - Raven Song (8253)  
Topcoat - Smoke - N (0616)



Apex Ultima  
Deep Sea Blue (9159)



Createx Scratch Finish - Crisscross Pattern



Apex Ultima  
Red Rust - N (9937)



Createx Dholpur - Brick Pattern



Apex Ultima  
Red Rust - N (9937)



Apex Ultima  
Warmstone (0N02)



Apex Ultima  
Sleigh Bells (8295)



Apex Ultima  
Topcoat 1 - Steel Grey (0643)  
Topcoat 2 - Antique White (0940)  
Grooves - Frosted Chocolate (8654)



Tile Guard Clear Matt  
Solemn Grey (8302)



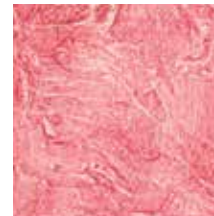
Tile Guard Clear Matt  
Solemn Grey (8302)



Tile Guard Clear Matt  
Frosted Chocolate (8654)



Tile Guard Clear Matt  
Blue Lake (8262)



Tile Guard Clear Matt  
Rose Meadows (9406)



Creutex Roller Finish - Waves Pattern



Createx Dholpur - Spray Pattern  
Apex Ultima  
Sleigh Bells (8295)

## Highlight wall

There's always that one exterior wall of your house which you decorate on festivals and special occasions, that wall which makes your house a landmark.

Use our vibrant and bold textures to transform your special highlight wall into a real showstopper.

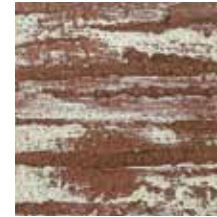




Apex Ultima  
Nut Brown - N (0419)  
Topcoat - Oyster Grey (8473)



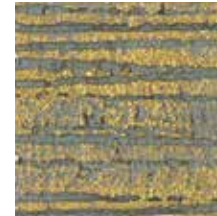
Createx Scratch Finish - Groovy Woods Pattern



Apex Ultima  
Basecoat - Nut Brown - N (0419)  
Topcoat - Oyster Grey (8473)



Apex Ultima  
Basecoat - After Dark (9229)  
Topcoat - Desert Sun (7938)



Apex Ultima  
Basecoat - Oxford Grey (8328)  
Topcoat - Ultima Gold - N (M045)



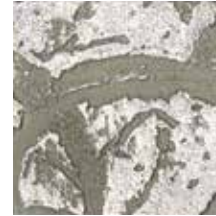
Apex Ultima  
Basecoat - Pigeon Crest (X148)  
Topcoat - Silver Moon - N (K093)



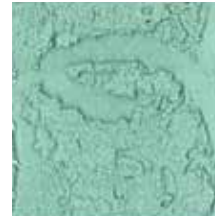
Apex Ultima  
Basecoat - Raven Song (8253)  
Topcoat - Indian Copper (M501)



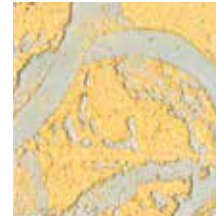
Apex Ultima  
Basecoat - Raven Song (8253)  
Topcoat - Indian Copper (M501)



Apex Ultima  
Basecoat - Rock Wall (8424)  
Topcoat - Grey Wash (9460)



Apex Ultima  
Riverdale (9264)



Apex Ultima  
Basecoat - Steel (6142)  
Topcoat - Posh Peach - N (9918)



Createx Scratch Finish - Swirly Circle Pattern



Apex Ultima  
Milky Green (9384)



Createx Dholpur - Spray Pattern



Apex Ultima  
Milky Green (9384)



Apex Ultima  
Barley (0572)



Apex Ultima  
Sleigh Bells (8295)



Apex Ultima  
Brick Red - N (0533)





Apex Ultima  
Frosted Chocolate (8654)



Apex Ultima  
Frosted Chocolate (8654)



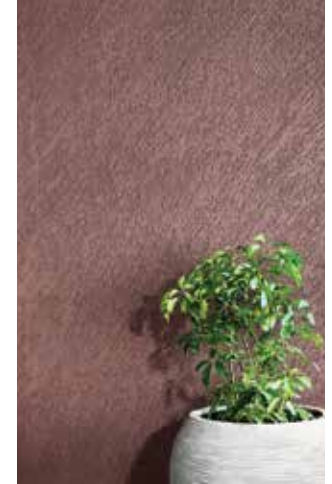
Apex Ultima  
Deep Rosewood - N (9996)



Apex Ultima  
Blue Lake (8262)



Apex Ultima  
Sands Of Time (4202)



Createx Scratch Finish - Rainfall Pattern





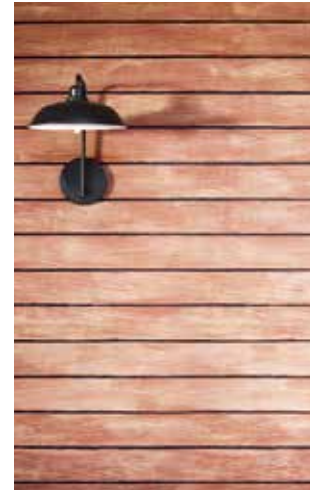
Creutex Scratch Finish - Oceans Pattern  
Apex Ultima  
Teal Blast (7503)

## Balcony wall

A special place in your house where you feel the bliss. A place where you often spend your 'me time'. A place where you spend time reading or simply watching the sky or chatting with your friends for hours. Make this place more personal with a texture that echoes your personality.



Apex Ultima  
Basecoat - Soft Brown (9535)  
Topcoat - Balasam Brown (8520) - Colourwash  
Grooves - Raven Song (8253)



Creutex Roller Finish - Woody Pattern



Apex Ultima  
Basecoat - Soft Brown (9535)  
Topcoat - Balasam Brown (8520) - Colourwash  
Grooves - Raven Song (8253)



Apex Ultima  
Basecoat - Mahogany (0R05)  
Topcoat - Raven Song (8253) - Colourwash  
Grooves - Raven Song (8253)



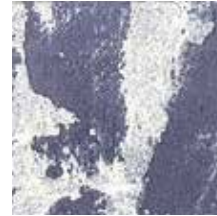
Apex Ultima  
Basecoat - Red Rust - N (9937)  
Topcoat - Pinyon Pine - N (9940) - Colourwash  
Grooves - Pinyon Pine - N (9940)



Apex Ultima  
Basecoat - Nut Brown - N (0419)  
Topcoat - Balasam Brown (8520) - Colourwash  
Grooves - Raven Song (8253)



Apex Ultima  
Basecoat - Purple Pansy (7182)  
Topcoat - Grey Wash (9460) - Colourwash



Apex Ultima  
Basecoat - Purple Pansy (7182)  
Topcoat - Grey Wash (9460) - Colourwash



Apex Ultima  
Basecoat - Grey Wash (9460)  
Topcoat - Thunder Cloud (8261) - Colourwash



Apex Ultima  
Basecoat - Grey Matter (8304)  
Topcoat - Steel Grey (0643) - Colourwash



Apex Ultima  
Basecoat - Enchanted Forest (8389)  
Topcoat - Grazing Land (8394) - Colourwash



Createx Scratch Finish - Slate Pattern



Apex Ultima  
Tropics (8513)



Createx Dholpur - Brushing Pattern



Apex Ultima  
Tropics (8513)



Apex Ultima  
Mud House (8656)



Apex Ultima  
Terra Luna - N (K095)



Apex Ultima  
Steel Grey (0643)

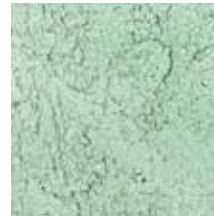




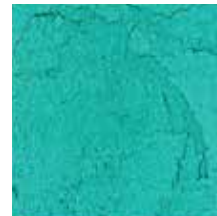
Apex Ultima  
Oceans Whisper (7436)



Apex Ultima  
Oceans Whisper (7436)



Apex Ultima  
Sea Dreams (8345)



Apex Ultima  
Teal Blast (7503)



Apex Ultima  
Vine Yard (8709)



Creutex Scratch Finish - Ocean Pattern

## Apex Createx Scratch Finish



Apex Createx is a synthetic intermediate finish designed with high quality exterior durable acrylic modified resin and special quality texturing material. With its unique engraved finish Apex Createx offers a wide range of patterns that combine decoration and protection.

### DIRECTIONS FOR USE

Clean the surface and repair the surface imperfections with a mixture of white cement and fine sand (ratio 1:3) and allow it to cure. Texture itself can accommodate minor mperfections. Apply Apex Createx by a trowel to obtain a uniform coating of around 1.5-2 mm thickness. Allow it to set for 5-15 min. before creating a pattern.

#### For Patterns:

**Crisscross/Rainfall:** For Crisscross pattern, move trowel in horizontal and vertical strokes. For patterns like vertical/swirl /rainfall move the trowel in appropriate direction. Let the texture dry overnight before topcoat application. Apply 2 - 3 coats of Asian Paints Apex or Apex Ultima by diluting 1 litre with a maximum of 400ml of water.

**Swirly Circle:** Create swirl pattern as mentioned above. Afterwards, use the lid of 1 L paint and move the grooves at the back of the lid clockwise or anti - clockwise on the texture to create swirls. Apply 2 coats of Apex Ultima dark shade. On top of

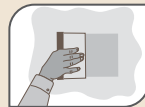
that, apply 1 coat of light shade for a dual tone effect.

**Ocean:** Move trowel in clockwise and anti - clockwise direction on the texture to create swirls on wet texture. Move the swirl tool to create clockwise patterns. Apply topcoat as suggested for crisscross pattern.

**Slate:** Paste masking tape to create the horizontal grooves. Apply 1 coat of texture and create pattern by gently dragging the material in random directions via steel trowel. Gently buff to flatten the edges. Allow it to set for 10 min. and then remove the masking tape. Apply 2 coats of Apex or Apex Ultima basecoat and let it dry. Apply topcoat as colourwash using sponge.

**Groovy Woods:** Apply 1 coat of texture and create the pattern by dragging edge of fiber trowel horizontally. Merge all the lines and flatten the pattern using the fiber trowel. Let it dry overnight. Apply topcoat as suggested for Swirly Circle.

## Apex Createx Dholpur



Asian Paints Apex Createx Dholpur is a synthetic intermediate finish designed with high quality acrylic modified resins for durable exteriors. With its unique stone like resemblance, Apex Createx Dholpur offers a wide range of patterns that combine decoration with protection and imparts a super-premium look to the exterior walls.

### DIRECTIONS FOR USE

Clean the surface and repair the surface imperfections with a mixture of white cement and fine sand (ratio 1:3) and allow it to cure. Texture itself can accommodate minor imperfections. Apply Dholpur texture with a trowel or a spatula to obtain coating of around 0.5 - 1 mm thickness. Allow to set it for 4 - 6 hours

#### For Patterns:

**Brick:** Apply 1st coat of Dholpur material using trowel and allow it to dry. Paste masking tape to get the desired brick pattern and apply 2nd coat of texture. Allow to set for 5 - 10 min. and create the pattern by moving the trowel in diagonal manner. Remove the masking tapes and allow it to set overnight. Apply 2 - 3 coats

of Asian Paints Apex or Apex Ultima by diluting 1 litre with a maximum of 400ml of wate.

**Spray:** Apply Createx Dholpur using a texture gun and compressor. Spray the texture uniformly over the surface and allow it to set overnight. Apply topcoat as suggested for Brick Pattern.

**Brushing:** Apply 1st coat of Dholpur material using trowel and allow to dry. Apply 2nd coat of texture using trowel and create brush pattern using Royal Play Special Effects brush and allow it to set overnight. Apply topcoat as suggested for brick pattern.



00000000 - Apex Createx Book

Manufactured by: Pragati Offset Pvt. Ltd., 17, Red Hills, Hyderabad - 500 004

Marketed by: Asian Paints Ltd., 6A, Shantinagar, Santacruz (E), Mumbai - 400 055

Packed dt: 09/2019

Net Qty: 1 No. Book

For more information, visit our website [www.asianpaints.com](http://www.asianpaints.com)

For feedback or complaints write to Customer Centricity Manager at  
the above mentioned Asian Paints Ltd. address or call 1800-209-5678

## Apex Createx Roller Finish



Asian Paints Apex Createx Roller Finish is a modified acrylic, water - based exterior product specially designed as an intermediary coating. It facilitates excellent adhesion of subsequent coats. It offers a unique texture pattern which have a distinctive appeal.

### DIRECTIONS FOR USE

Clean the surface and repair surface imperfections with Asian Paints TruCare Wall Putty or a mixture of white cement and fine sand (in the ratio of 1:3). For freshly plastered surfaces, apply one coat of Asian Paints TruCare Exterior Wall Primer by thinning 1 litre of each primer and water and allow it to dry. Apply Apex Createx Roller Finish (without diluting) using Honey Comb Open Cell Roller or any other application tool to generate desired patterns and allow to dry for 4 - 6 hours. Apply 2 - 3 coats of Apex or Apex Ultima by diluting 1 litre with maximum 400ml of water.

#### For Patterns:

**Waves:** After depositing texture use steel trowel to lightly press on the wall and move the trowel in clockwise direction to create the pattern. Do this for the whole area of application. Let the texture dry for a minimum of 4 hours. Use 1 coat of Tile Guard

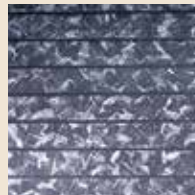
Clear followed by one or two coats of Tile Guard Tinted. Use sponge to color wash and get a 2 - tone appearance. Add 300ml of water to 1 litre of Apex Tile Guard Clear Matt.

**Woody:** Once texture is deposited on the substrate, use timber tool to roll in vertical or horizontal way to create the desired woody pattern. Let the texture dry for a minimum of 4 hours. Apply topcoat, basecoat as done for Slate. Use Ultima in grooves.

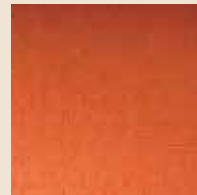
**Diagonal:** Once texture is deposited on the substrate, use steel trowel to lightly press on the wall and move the trowel in diagonal pattern ensuring uniformity in the diagonal lines. Let the texture dry for a minimum of 4 hours. Apply topcoat as suggested above for waves pattern.



**Createx Scratch Finish  
Crisscross Pattern**  
Apex Ultima  
Winter Moon (8258)



**Createx Scratch Finish  
Slate Pattern**  
Apex Ultima  
Basecoat - Purple Pansy (7182)  
Topcoat - Grey Wash (9460) -  
Colourwash



**Createx Dholpur  
Brick Pattern**  
Apex Ultima  
Red Rust - N (9937)



**Createx Roller Finish  
Diagonal Pattern**  
Tile Guard Clear Matt  
Topcoat 1 - Sandstone (3211)  
- Colourwash  
Topcoat 2 - Herbal Pack (8602)  
- Colourwash





**Createx Scratch Finish  
Rainfall Pattern**  
Apex Ultima  
Frosted Chocolate (8654)



**Createx Scratch Finish  
Groovy Woods Pattern**  
Apex Ultima  
Basecoat - Nut Brown - N (0419)  
Topcoat - Oyster Grey (8473)



**Createx Dholpur  
Spray Pattern**  
Apex Ultima  
Milky Green (9384)



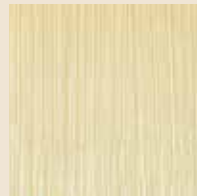
**Createx Roller Finish  
Woody Pattern**  
Apex Ultima  
Basecoat - Soft Brown (9535)  
Topcoat - Balasam Brown (8520)  
- Colourwash  
Grooves - Raven Song (8253)



**Createx Scratch Finish  
Swirly Circle Pattern**  
Apex Ultima  
Basecoat - Raven Song (8253)  
Topcoat - Indian Copper (M501)



**Createx Scratch Finish  
Ocean Pattern**  
Apex Ultima  
Oceans Whisper (7436)



**Createx Dholpur  
Brushing Pattern**  
Apex Ultima  
Tropics (8513)



**Createx Roller Finish  
Waves Pattern**  
Tile Guard Clear Matt  
Solemn Grey (8302)

The swatch colours are indicative. Please refer the book "Apex Createx- Textures for Exterior Spaces" at your nearest Colour Ideas store for actual representation.