



HABITAT

Coexistence in an interconnected world



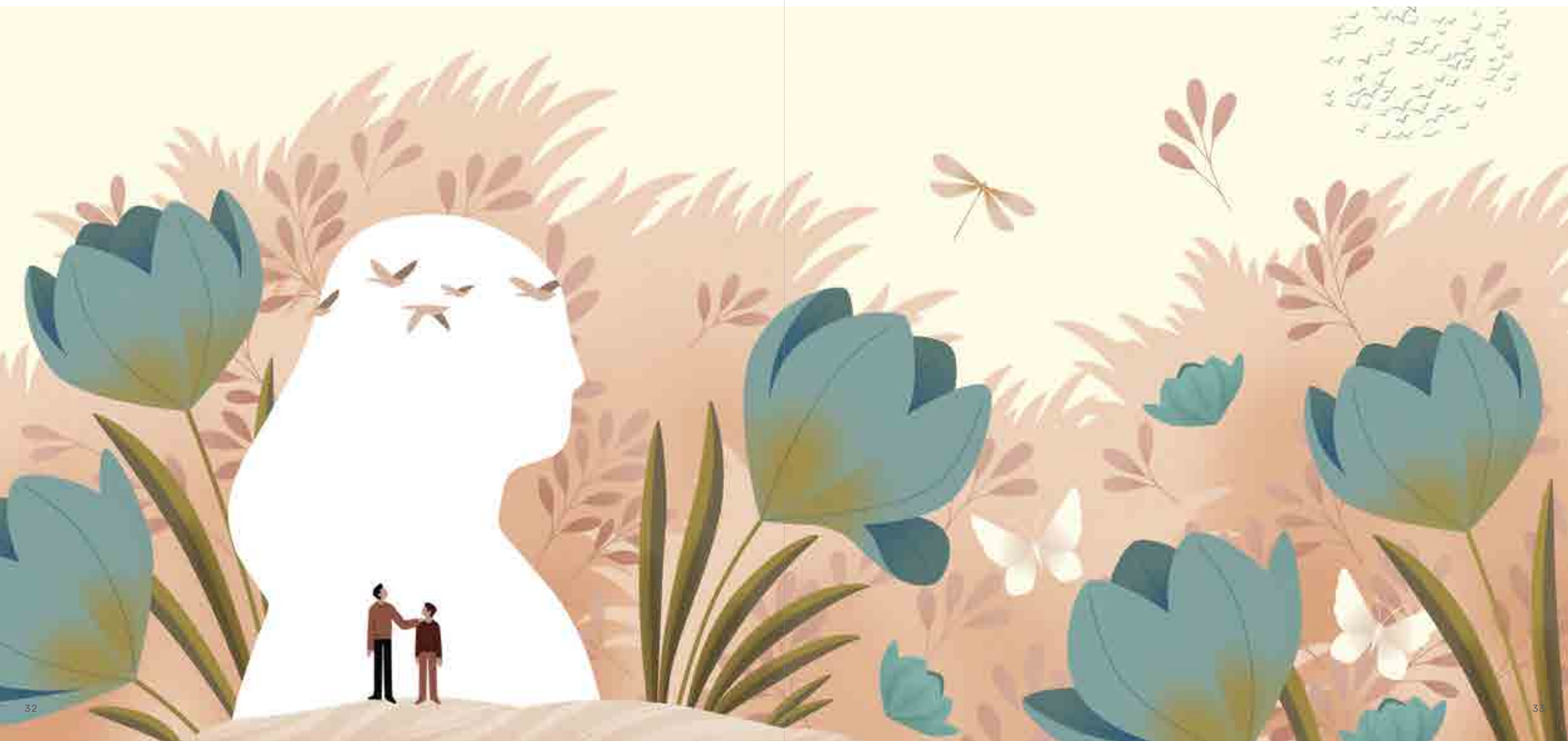
HABITAT

Coexistence in an interconnected world

Habitat is a story of coexistence and humility – of pausing and observing the world around us and having transformed in that moment of stillness. There is no “back to normal” for we can’t unsee our lopsided past. It’s time for a systemic rethink of how we exist and coexist with the world.

In this moment of reality check, we’ve witnessed nature rejuvenate with a vengeance and had time to reflect on the impact of our actions. Humbled by the enormity of the visible and invisible world, this change in our perception of the world – as a network of interconnected systems – forces us to systematically change our lifestyle, industries, education and our fundamental habits. We find new ways to coexist with the world around us and respond collectively with solutions that present a healthier and more balanced future.

COLOUR TREND 01



COLOUR & MATERIAL FORECAST

TREND 01 | HABITAT

Coexistence, Humility, Compassion


The palette for Habitat stems from a state of humility and seeking a balance with nature. The warmer intermediate spectrum represents a feeling of compassion, while the subtle grey overlay gives a murky, mature tone to the colours.

Earthy shades of **Willow Song**, **Deccan Earth-N** and **Mossy Ground-N** take inspiration from forests, moss-laden barks, stones and weathered materials. **Basra Pearl-N** bridges the absorbing nature of these shades and the optimism of **Crème Anglaise-N** and **Malhaar-N** – shades that hint at sunlight and water, without which life couldn't exist.


Materials that age gracefully and have a low impact are befitting of Habitat. **Rammed Earth**, steadily regaining popularity over the years, exhibits these qualities and fits the Indian context. **Recycled Stone Tiles**, unique building material made from recycling quarry stone dust or construction demolition waste, reimagine the value of waste. Environment-friendly **Tencel™** and experimental **Biodegradable Textiles** pave the way for us to change how we produce and perceive textiles. The coarse grains of **Royale Play Teodorico Travertine** display a stone-like poise, while the folksy patterns of the **Desert Legend wallpaper** from Nilaya Sand Tales add a touch of optimism.

C


COLOURS




Crème Anglaise-N | 9887



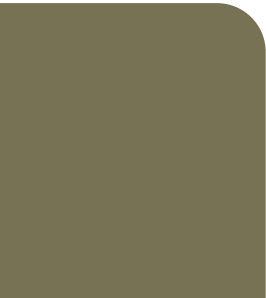
Mossy Ground-N | 9858




Malhaar-N | 9744



Deccan Earth-N | 9920




Willow Song | 8477




Basra Pearl-N | 0974

T

TEXTURE




Royale Play Teodorico Travertine
Herbal Pack 8602




Nilaya Sand Tales
Desert Legend - W145Z358N75

M

MATERIAL



Biodegradable Textiles



Recycled Stone Tiles

P

PATTERN

Curved forms like arched doorways and highlight walls feel gentle and empathetic compared to harsh straight edges.

An open plan with ample natural light and minimal use of resources, depicts aspects of wellness architecture.

Ledges and niches carved on the walls from earth and clay utilise existing materials.

DECOR DIRECTION

TREND 01 | HABITAT

Habitat is not just about lifestyle but the lifecycle. It's about design that's empathetic yet innovative and spaces that use natural materials, optimise outdoor lighting, and encourage natural ventilation thus reducing the overall carbon footprint.



BASRA PEARL N
0974



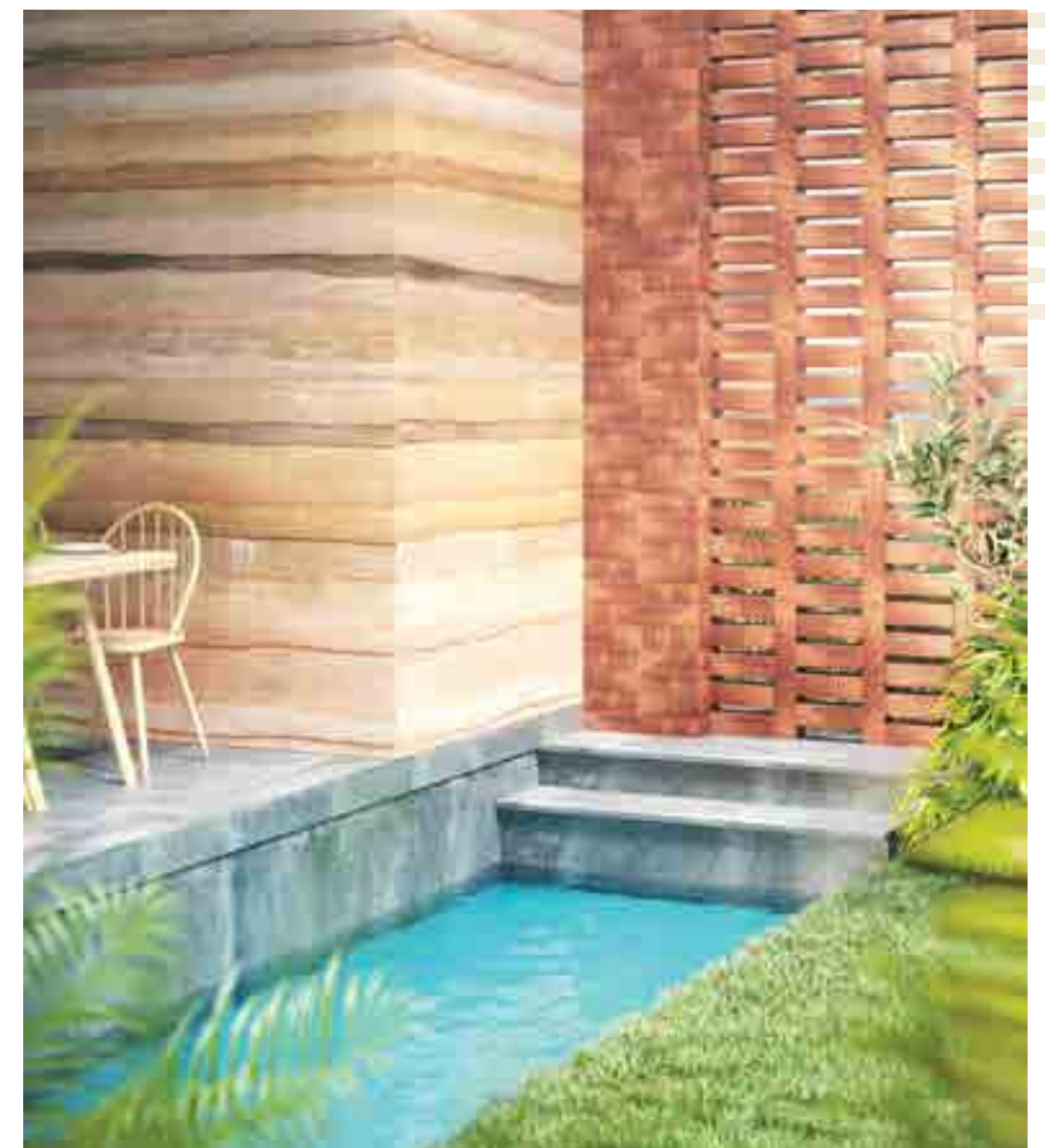


MOSSY GROUND-N
9858

STYLE TIP

*A modestly styled space
lets simplicity and the
richness of materials
speak for themselves.*

The flowing lines
of Rammed Earth
add intensity to this
modern courtyard.





An outdoor tropical garden that embraces nature induces a sense of inner balance.



DECCAN
EARTH N
9920



Water adds a calming effect to this garden, cooling the ferocity of an afternoon sky.



NILAYA SAND TALES
DESERT LEGEND
W145Z358N75



WILLOW SONG
8477

Folksy patterns of the Desert Legend wallpaper by Nilaya Sand Tales add a touch of optimism to this solemn space.

FURNITURE DETAIL

The Chandigarh chair remains an icon of modernism cherished till date for its austerity.





DECOR DETAIL

Plant pods and an indoor herb garden inspire you to grow your own food and be self-sufficient.



CRÈME
ANGLAISE N
9887

TIPS TO
CREATE
THE HABITAT
LOOK



CONSCIOUS AND EXPERIMENTAL

Ft. Reclaimed Oil Palm
by Nataša Perković

Pick products made of circular materials like this collection by Nataša Perković, made from fibrous palm oil byproducts.



INNOVATIVE YET ACCESSIBLE

Ft. Cast Stone
by Artemis

Made of fine aggregates sourced from quarries, Artemis' Cast Stones give a gorgeous new form to the waste we create in the world.



BECOMING ONE WITH NATURE

Ft. Biodegradable Products
by Chip[s]Board®

Biodegradable materials by brands like Chip[s] Board® are not only durable and recyclable, they also disintegrate back into nature at their end.



BEAUTIFYING IGNORED BYPRODUCTS

Ft. Reclaimed Oil Palm
by Nataša Perković

Explore products that turn waste into beautiful decor objects. These products by Nataša are all made to turn an "environmental nuisance into sustainable material".



THOUGHTFULLY MADE,
THOUGHTFULLY CONSUMED

Ft. Square Root Rugs
by Paiwand Studio

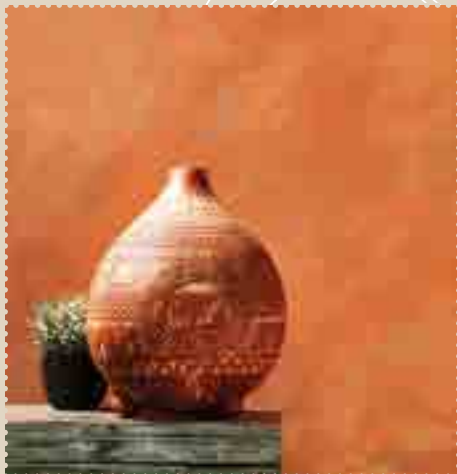
Products like the Square Root Rug made from discarded towels and uniforms are conscious yet tasteful decor additions to a contemporary home.



WEAVING WASTE INTO LUXURY

Ft. Wleather
by Paiwand Studio

Support local brands that upcycle local materials into luxury goods. These pillow covers by Paiwand, an Indian studio, are made of hand-woven leather waste.



CRADLE-TO-CRADLE

Ft. Ecological Paints
by Graphenstone

Apply finishes and textures that also purify the air inside our homes. Graphene-based Graphenstone is one such paint composed of elements that absorb CO2.

“Humankind has
not woven the web
of life. We are but
one thread within
it. Whatever we do
to the web, we do to
ourselves. All things
are bound together.
All things connect.”

Chief Seattle