



SABYASACHI

for

nilaya

furnishing by  asianpaints

MAKHMAL



Sabyasachi x Nilaya

What I design is the result of myriad inspirations – whether it's fashion or homes. And creating designs for Heartland was like stepping into a familiar world, textured by a variety of experiences, acquisitions, memories and stories that have stayed with me, knowingly and unknowingly: the skillfully painted fabrics that were born along the Coromandel Coast; embroideries from an ancient world; well-remembered motifs and patterns that continue to enchant; old-world Calcutta with its fading luxury; the traditions of miniaturists from colonial-era Murshidabad.

The Thar, Makhmal and Soofah collections that comprise Heartland celebrate the beauty of classical motifs reinterpreted and hand painted by artists from the Sabyasachi Art Foundation. They find expression through a reimagining of traditional patterns and a distinctive palette of colours I have evolved over time. These carefully crafted fabrics can transform spaces and perhaps your perspective as well. The patterns, designs and motifs that make up the fabric collections of Heartland is an endeavour to make this journey of transformation uncommon and unforgettable – as it should be.

After all, at the heart of every home is the story of the people who inhabit it, make it and shape it just the way they like it. Layer it with well-loved elements and their distinct styles. Heartland, I hope, serves as a reminder of the beauty that still remains, and endures, in an uncertain world.

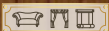
MAKHMAL

The things that matter are the ones
that you remember, that endure,
that outlive you.





MAH001



ISF001



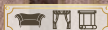
PAD003



BUD001



HER001



BOL001



GUL003



MAH003



BOL003



BUD003



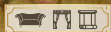
HER003



ISF003



KMV001



GUL002



MAH002



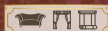
ISF001



HER002



PAD002



COV001



BOL002



BUD002





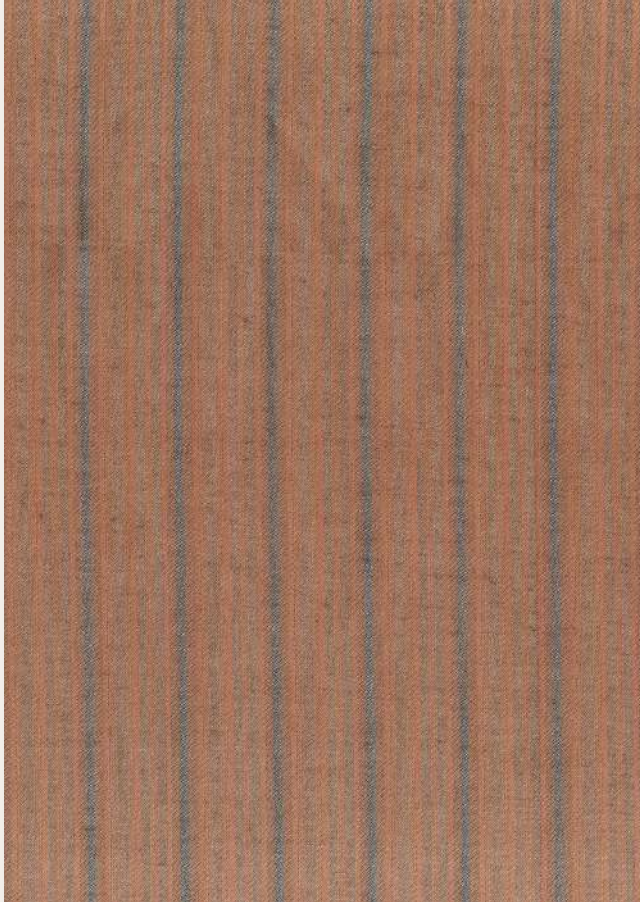


KAMALIKA VELVET | KMV002



GSM	MARTINDALE	COMPOSITION	V. REPEAT	H. REPEAT	HSN CODE
520	45000	100% Cotton	19.7	11.5	58012790

BACK



MAHESHWAR STRIPER | MAH005



GSM
250

MARTINDALE
67000

COMPOSITION
45% Linen,
34% Polyamide,
21% Viscose

V. REPEAT
STRIPE

H. REPEAT
3

HSN CODE
55169200

BACK



ISFAHAN | ISF004



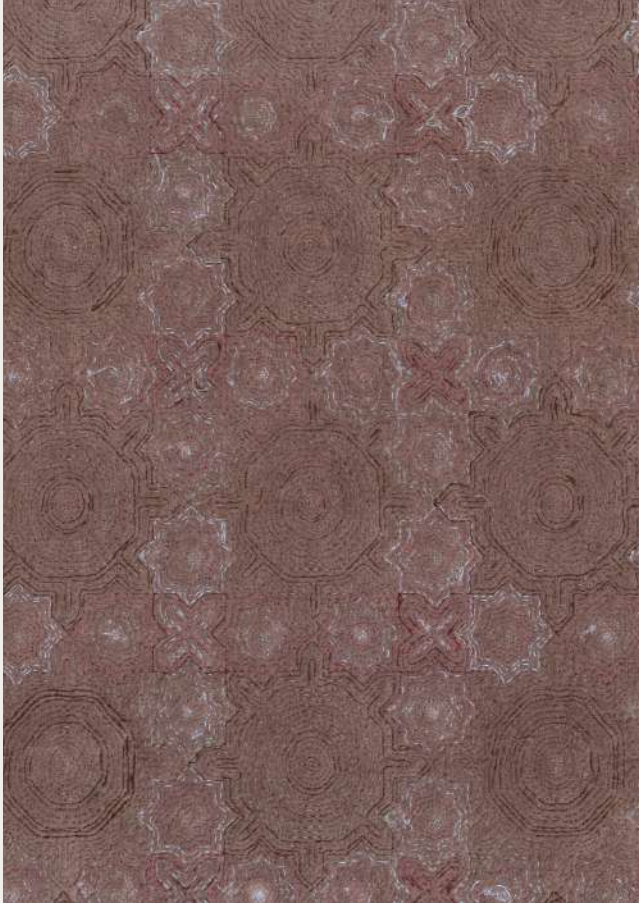
GSM
124

MARTINDALE
7000

COMPOSITION
100% Silk

HSN CODE
50072090

BACK



BOLPUR MAKHMAL | BOL004



GSM
610

COMPOSITION
Base- 100% Cotton,
Emb- 100% Cotton

V. REPEAT
16

H. REPEAT
15.2

HSN CODE
58012790

BACK



PERSIS VELVET | PEV001



GSM
520

MARTINDALE
45000

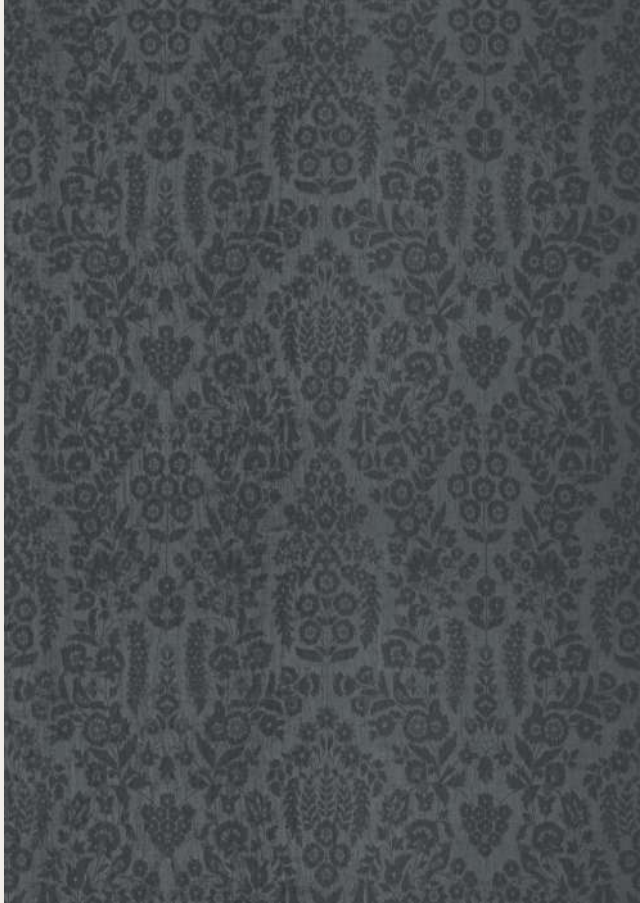
COMPOSITION
100% Cotton

V. REPEAT
79.2

H. REPEAT
69.5

HSN CODE
58012790

BACK



PASHM DAMASK | PAD004



GSM
220

MARTINDALE
68000

COMPOSITION
56% Wool,
44% Polyamide

V. REPEAT
62

H. REPEAT
46.5

HSN CODE
55151330

BACK



HERAT STRIPER | HER005



GSM
410

MARTINDALE
25000

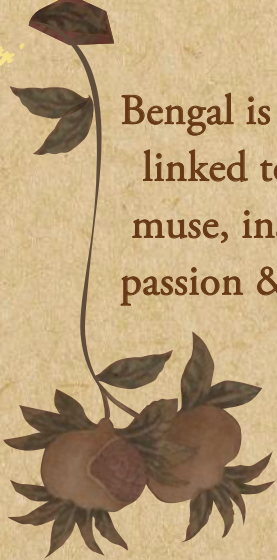
COMPOSITION
40% Wool,
40% Viscose,
20% Polyester

V. REPEAT
STRIPE

H. REPEAT
6

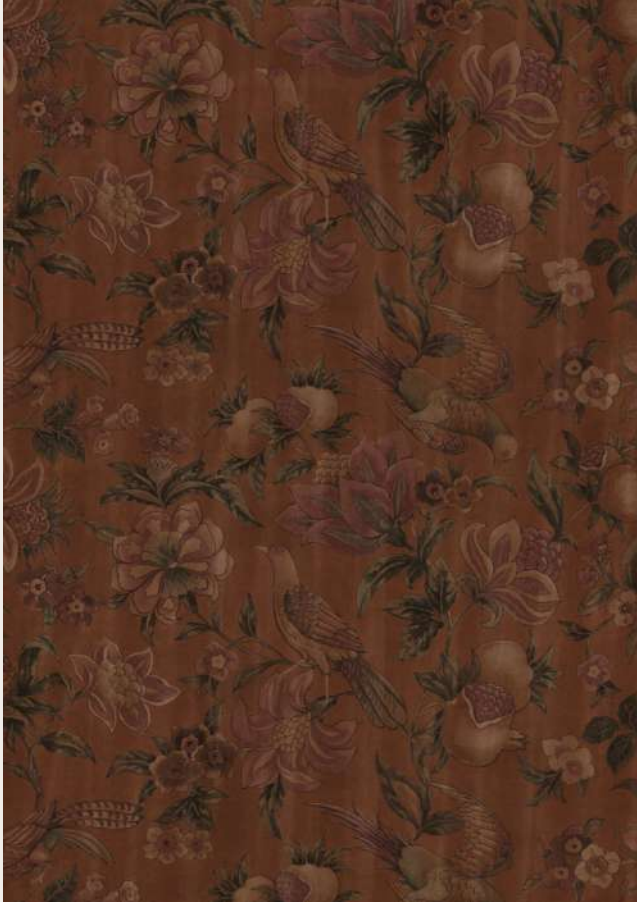
HSN CODE
55151330

BACK



Bengal is inextricably
linked to red – it is
muse, inspiration,
passion & abiding mystery.





COROMANDEL VELVET | COV002



GSM
520

MARTINDALE
45000

COMPOSITION
100% Cotton

V. REPEAT
70.2

H. REPEAT
139

HSN CODE
58012790

BACK



HERAT STRIPER | HER004



GSM
410

MARTINDALE
25000

COMPOSITION
40% Wool,
40% Viscose,
20% Polyester

V. REPEAT
STRIPE

H. REPEAT
6

HSN CODE
55151330

BACK

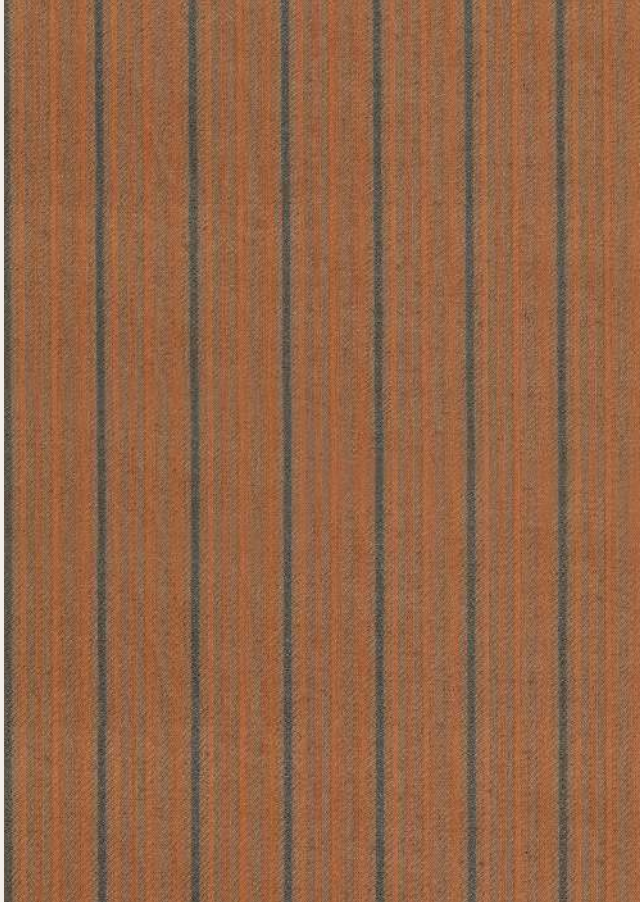


PICHWAI VELVET | PCV001



GSM 420	MARTINDALE 20000	COMPOSITION 100% Linen	V. REPEAT 71	H. REPEAT 67.7	HSN CODE 53091910
------------	---------------------	---------------------------	-----------------	-------------------	----------------------

BACK



MAHESHWAR STRIPER | MAH004



GSM
250

MARTINDALE
67000

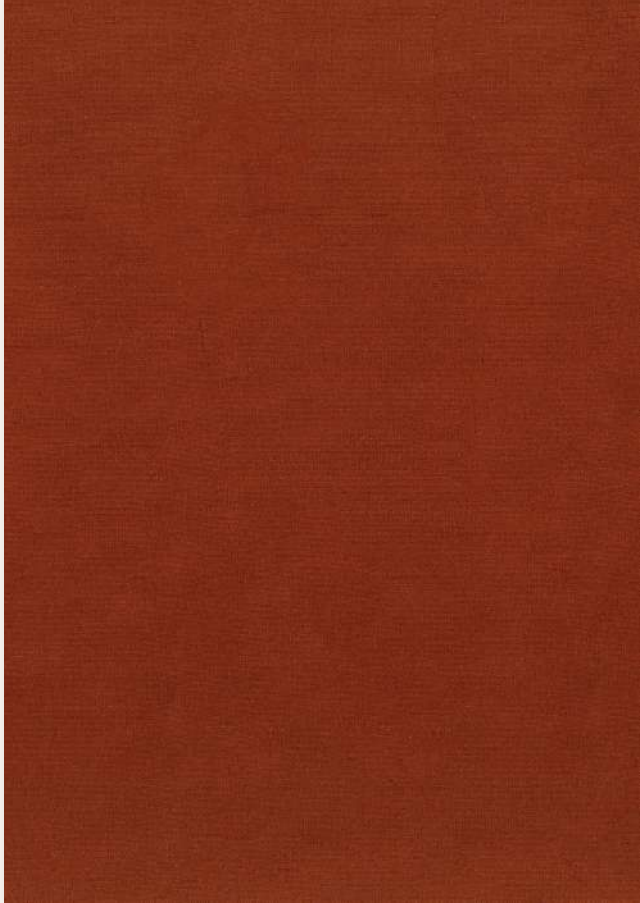
COMPOSITION
45% Linen,
34% Polyamide,
21% Viscose

V. REPEAT
STRIPE

H. REPEAT
3

HSN CODE
55169200

BACK



ISFAHAN | ISF002



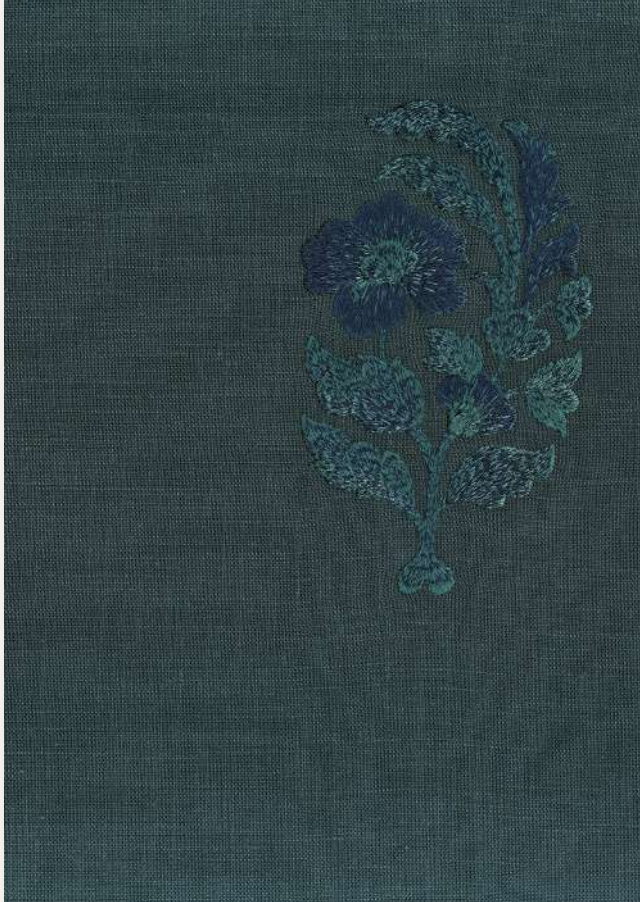
GSM
124

MARTINDALE
7000

COMPOSITION
100% Silk

HSN CODE
50072090

BACK



BUDGAM LINEN | BUD004



GSM
366

COMPOSITION
Base- 70% Viscose, 30% Linen
Emb- 100% Viscose

V. REPEAT
32

H. REPEAT
44.5

HSN CODE
55169200

BACK



GULBAG VELVET | GUL001



GSM
520

MARTINDALE
45000

COMPOSITION
100% Cotton

V. REPEAT
79.8

H. REPEAT
69.5

HSN CODE
58012790

BACK



MAHESHWAR STRIPER | MAH001



GSM
250

MARTINDALE
67000

COMPOSITION
45% Linen,
34% Polyamide,
21% Viscose

V. REPEAT
STRIPE

H. REPEAT
3

HSN CODE
55169200

BACK



ISFAHAN | ISF001



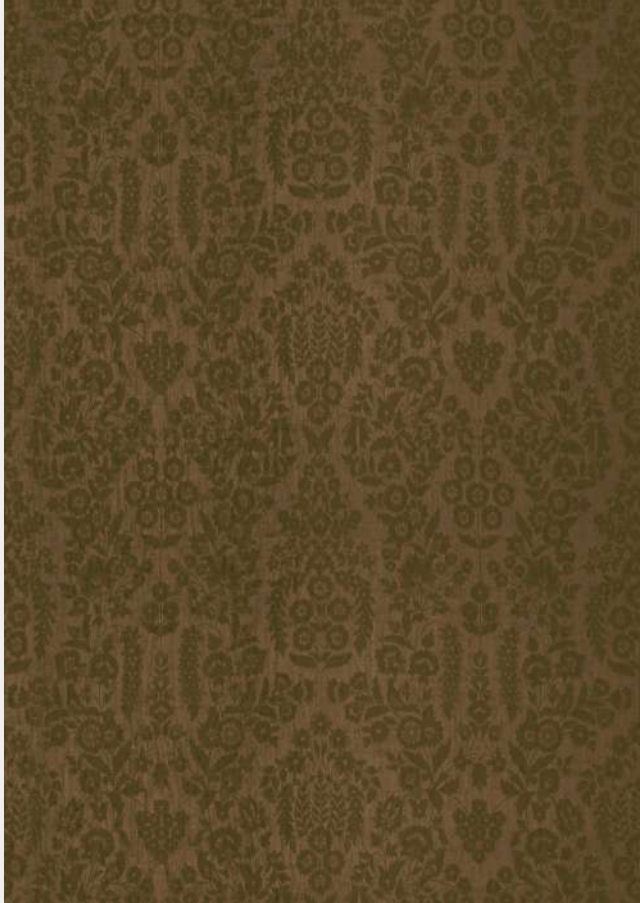
GSM
124

MARTINDALE
7000

COMPOSITION
100% Silk

HSN CODE
50072090

BACK



PASHM DAMASK | PAD003



GSM
220

MARTINDALE
68000

COMPOSITION
56% Wool,
44% Polyamide

V. REPEAT
62

H. REPEAT
46.5

HSN CODE
55151330

BACK



There's comfort
in the familiar,
like the warm
embrace of an
old friend.





BUDGAM LINEN | BUD001



GSM
366

COMPOSITION
Base- 70% Viscose, 30% Linen
Emb- 100% Viscose

V. REPEAT
32

H. REPEAT
44.5

HSN CODE
55169200

BACK



HERAT STRIPER | HER001



GSM
410

MARTINDALE
25000

COMPOSITION
40% Wool,
40% Viscose,
20% Polyester

V. REPEAT
STRIPE

H. REPEAT
6

HSN CODE
55151330

BACK



BOLPUR MAKHMAL | BOL001



GSM	MARTINDALE	COMPOSITION	V. REPEAT	H. REPEAT	HSN CODE
655	10000	Base- 100% Cotton, Emb- 100% Cotton	31.7	32.2	58012790

BACK



GULBAG VELVET | GUL003



GSM
520

MARTINDALE
45000

COMPOSITION
100% Cotton

V. REPEAT
79.8

H. REPEAT
69.5

HSN CODE
58012790

BACK



MAHESHWAR STRIPER | MAH003



GSM
250

MARTINDALE
67000

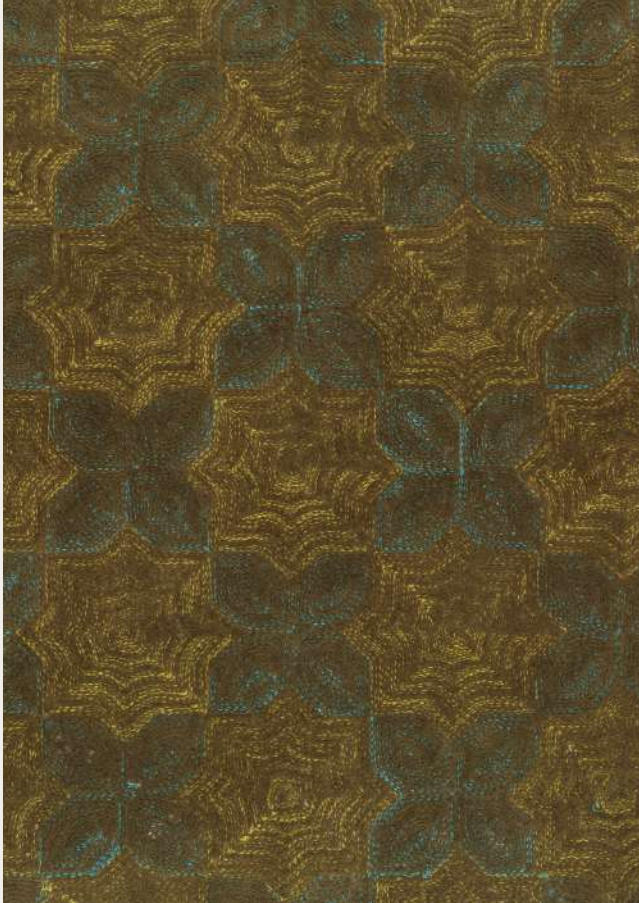
COMPOSITION
45% Linen,
34% Polyamide,
21% Viscose

V. REPEAT
STRIPE

H. REPEAT
3

HSN CODE
55169200

BACK



BOLPUR MAKHMAL | BOL003



GSM
630

COMPOSITION
Base- 100% Cotton,
Emb- 100% Cotton

V. REPEAT
10.6

H. REPEAT
11

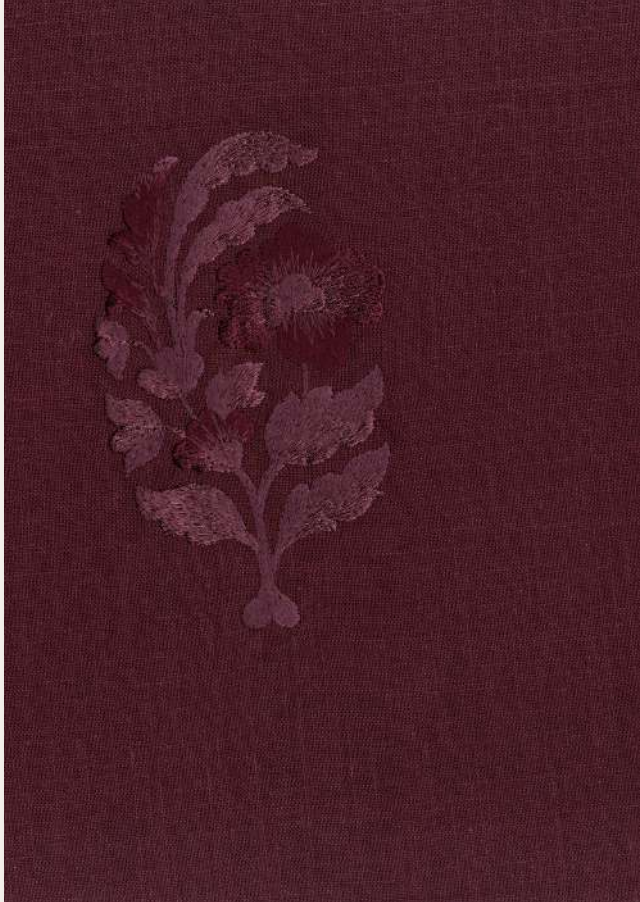
HSN CODE
58012790

BACK

It's that time of day,
of soft light and silent
silhouettes, when
everything
slows down.







BUDGAM LINEN | BUD003



GSM
366

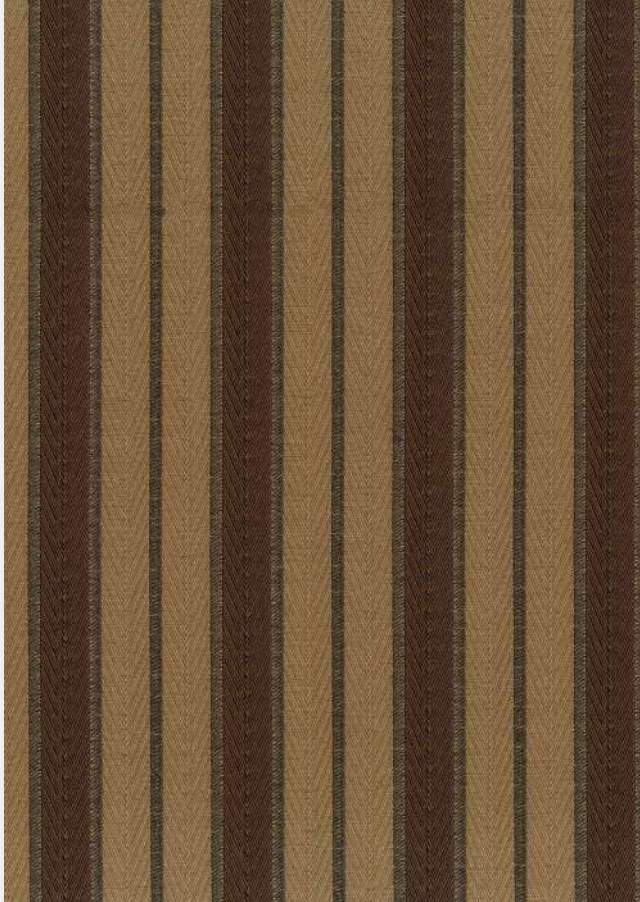
COMPOSITION
Base- 70% Viscose, 30% Linen
Emb- 100% Viscose

V. REPEAT
32

H. REPEAT
44.5

HSN CODE
55169200

BACK



HERAT STRIPER | HER003



GSM
410

MARTINDALE
25000

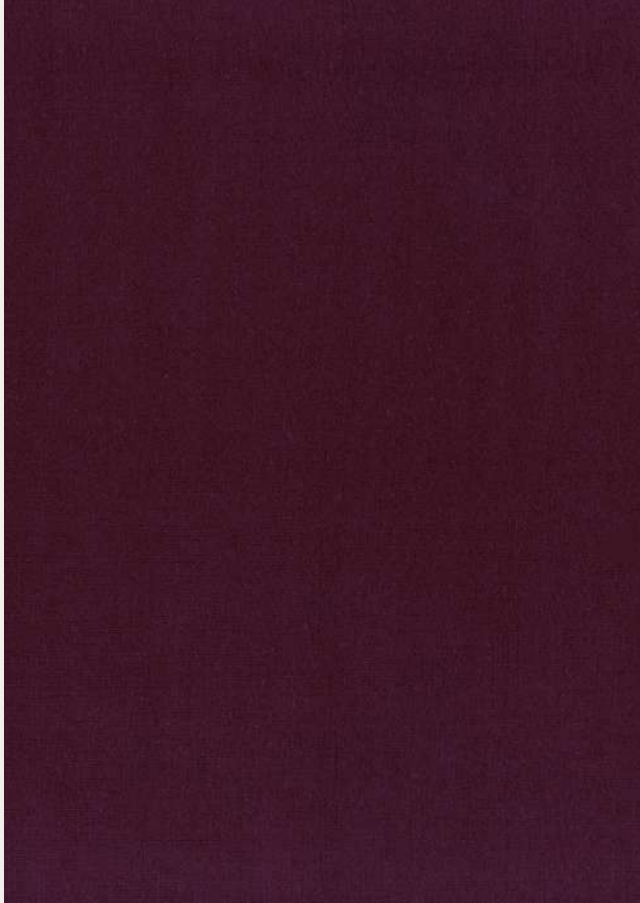
COMPOSITION
40% Wool,
40% Viscose,
20% Polyester

V. REPEAT
STRIPE

H. REPEAT
6

HSN CODE
55151330

BACK



ISFAHAN | ISF003



GSM
124

MARTINDALE
7000

COMPOSITION
100% Silk

HSN CODE
50072090

BACK



KAMALIKA VELVET | KMV001



GSM	MARTINDALE	COMPOSITION	V. REPEAT	H. REPEAT	HSN CODE
520	45000	100% Cotton	19.7	11.5	58012790

BACK



The one person
I need to find
is myself

- *Charulata, A Satyajit Ray Film*





GULBAG VELVET | GUL002



GSM
520

MARTINDALE
45000

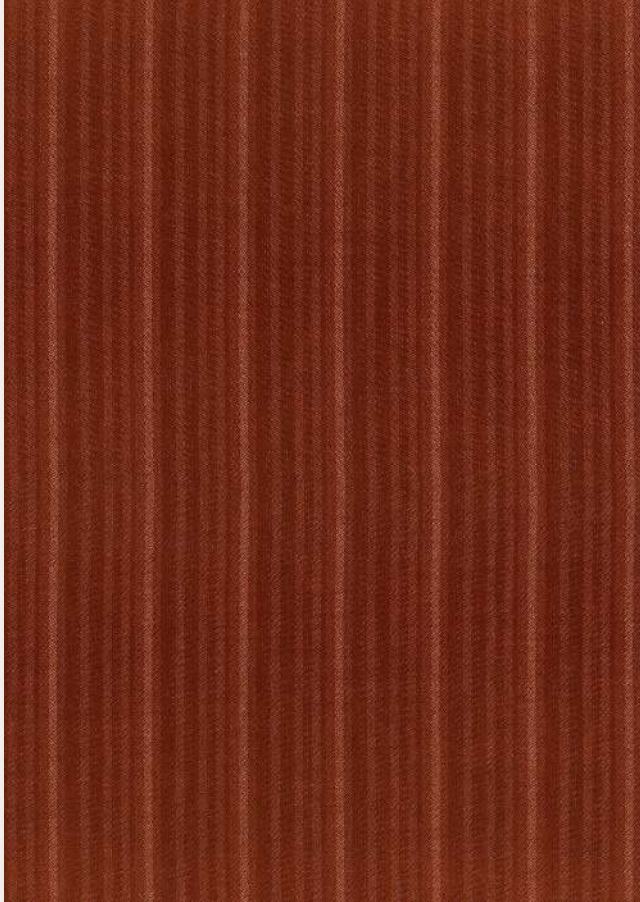
COMPOSITION
100% Cotton

V. REPEAT
79.8

H. REPEAT
69.5

HSN CODE
58012790

BACK



MAHESHWAR STRIPER | MAH002



GSM	MARTINDALE	COMPOSITION	V. REPEAT	H. REPEAT	HSN CODE
250	67000	45% Linen, 34% Polyamide, 21% Viscose	STRIPE	3	55169200

BACK



ISFAHAN | ISF001



GSM
124

MARTINDALE
7000

COMPOSITION
100% Silk

HSN CODE
50072090

BACK



HERAT STRIPER | HER002



GSM
410

MARTINDALE
25000

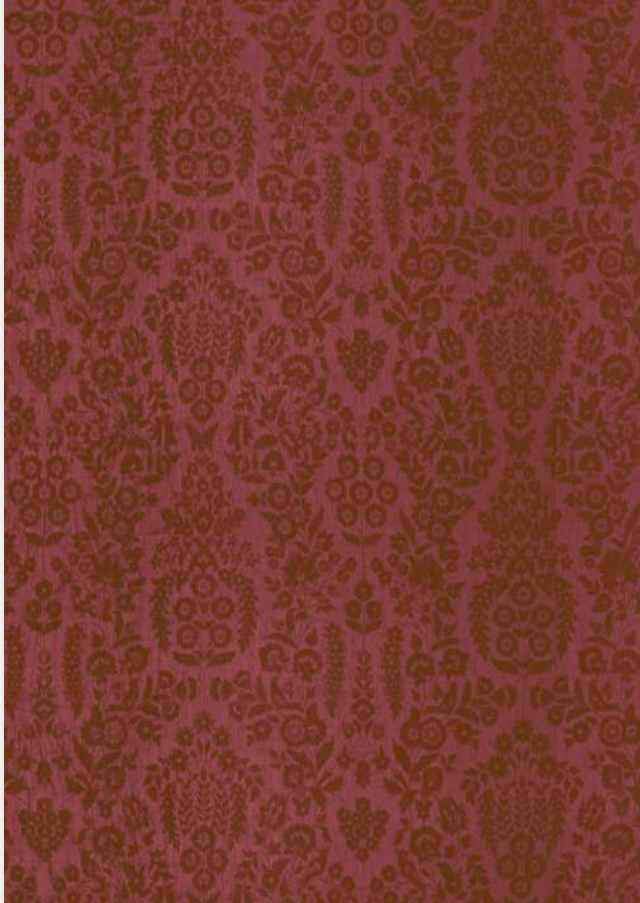
COMPOSITION
40% Wool,
40% Viscose,
20% Polyester

V. REPEAT
STRIPE

H. REPEAT
6

HSN CODE
55151330

BACK



PASHM DAMASK | PAD002



GSM
220

MARTINDALE
68000

COMPOSITION
56% Wool,
44% Polyamide

V. REPEAT
62

H. REPEAT
46.5

HSN CODE
55151330

BACK

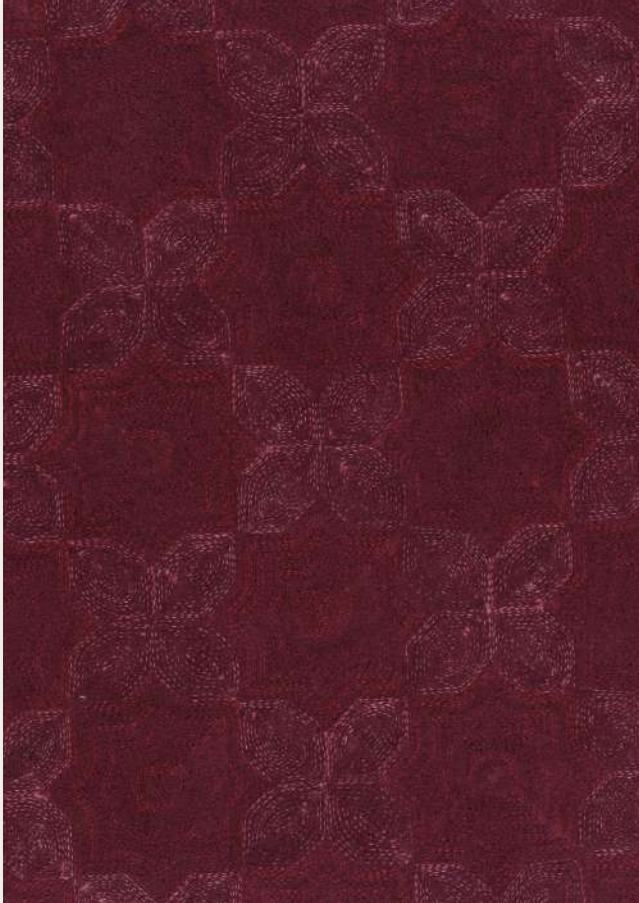


COROMANDEL VELVET | COV001



GSM 520	MARTINDALE 45000	COMPOSITION 100% Cotton	V. REPEAT 70.2	H. REPEAT 139	HSN CODE 58012790
------------	---------------------	----------------------------	-------------------	------------------	----------------------

BACK



BOLPUR MAKHMAL | BOL002



GSM
620

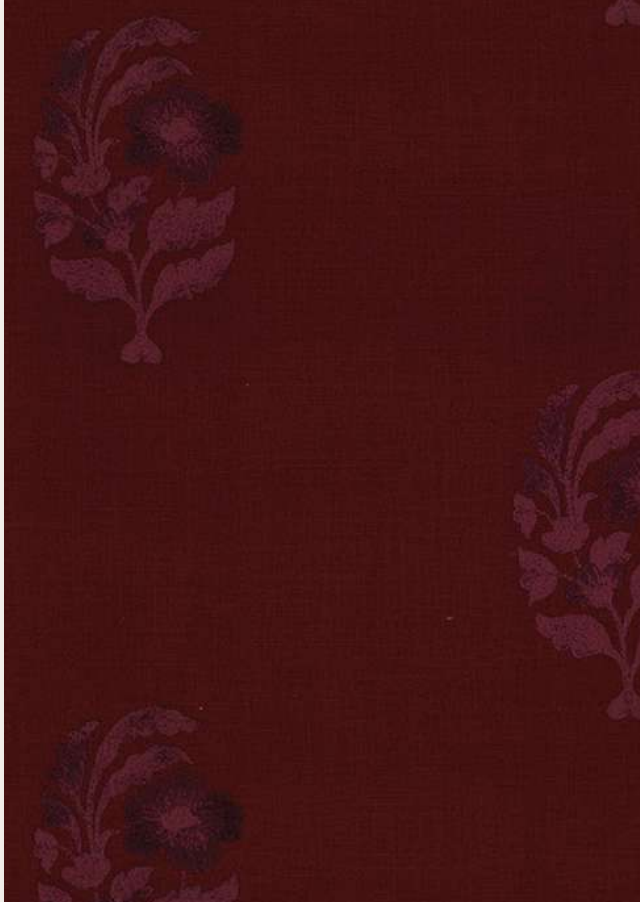
COMPOSITION
Base- 100% Cotton,
Emb- 100% Cotton

V. REPEAT
10.7

H. REPEAT
10.6

HSN CODE
58012790

BACK



BUDGAM LINEN | BUD002



GSM
366

COMPOSITION
Base- 70% Viscose, 30% Linen
Emb- 100% Viscose

V. REPEAT
32

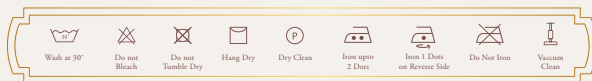
H. REPEAT
44.5

HSN CODE
55169200

BACK

DESIGN	BOLPUR MAKHMAL	BUDGAM LINEN	COROMANDEL VELVET	GULBAG VELVET
WIDTH	144.5, 145, 146	142.5	145	144
COMPOSITION	Base- 100% Cotton, Emb- 100% Cotton	Base- 70% Viscose, 30% Linen, Emb-100% Viscose	100% Cotton	100% Cotton
HSN CODE	58012790	55169200	58012790	58012790
GSM	655, 620, 630, 610	366	520	520
HORIZONTAL REPEAT	15.2, 32.2, 11, 10.6	44.5	139	69.5
VERTICAL REPEAT	16, 31.7, 10.6, 10.7	32	70.2	79.8
MARTINDALE	10000	N/A	45000	45000
WASH CARE				
END USE				

WASH CARE

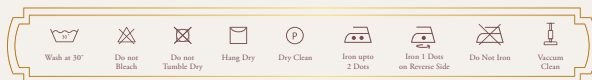


END USE



DESIGN	HERAT STRIPER	ISFAHAN	KAMALIKA VELVET	MAHESHWAR STRIPER
WIDTH	146	140	144	146
COMPOSITION	40% Wool, 40% Viscose, 20% Polyester	100% Silk	100% Cotton	45% Linen, 34% Polyamide, 21% Viscose
HSN CODE	55151330	50072090	58012790	55169200
GSM	410	124	520	250
HORIZONTAL REPEAT	6	N/A	11.5	3
VERTICAL REPEAT	STRIPE	N/A	19.7	STRIPE
MARTINDALE	25000	2000	45000	67000
WASH CARE				
END USE				

WASH CARE

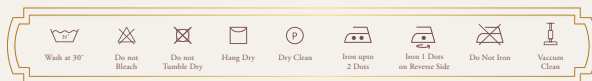


END USE



DESIGN	PASHM DAMASK	PERSIS VELVET	PICHWAI VELVET
WIDTH	143	144	140
COMPOSITION	56% Wool, 44% Polyamide	100% Cotton	100% Linen
HSN CODE	55151330	58012790	58012790
GSM	220	520	420
HORIZONTAL REPEAT	46.5	69.5	67.7
VERTICAL REPEAT	62	79.2	71
MARTINDALE	68000	45000	20000
WASH CARE			
END USE			

WASH CARE



END USE



DESIGN	RRP (Without GST)	GST	RRP (With GST)
BOLPUR MAKHMAL	9500	457	9975
BUDGAM LINEN	5200	260	5460
COROMANDEL VELVET	8000	400	8400
GULBAG VELVET	8000	400	8400
HERAT STRIPER	6000	300	6300
ISFAHAN	6500	325	6825
KAMALIKA VELVET	8000	400	8400
MAHESHWAR STRIPER	4300	215	4515
PASHM DAMASK	7000	350	7350
PERSIS VELVET	8000	400	8400
PICHWAI VELVET	8000	400	8400

