

PRODUCT CODE 5429

# Tile Grout - Cement Based

Asian Paints SmartCare Tile Grout - Cement Based is a single component polymer modified tile grout for filling tile joints upto 5 mm width. It is a specially formulated premium, fast setting, low shrinkage grout that prevents ingress of water through the joint.



## PRODUCT BENEFITS

### Specification

Meets the requirements of ANSI 118.6 (Specification for tile grouts)

### Easy to mix

Cement based easy to mix joint filler available in 9 brilliant shades

### Impermeability

Water repelling impermeable joint filler suited for domestic and commercial floors, walls etc.

### Excellent adhesion

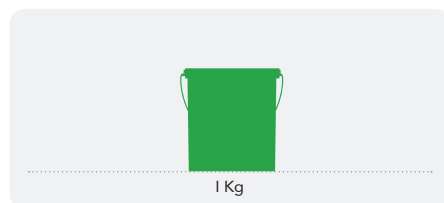
Sustainable and durable for a long time

### Easy to clean

Non-dusting and easy to clean

## PRODUCT FEATURES

### AVAILABLE PACKS



Shelf life: 12 months from the date of manufacture when stored in original packaging under normal dry conditions.

### COVERAGE

Tile Dimensions			Coverage (Tile Area in Sq.ft) per kg for width of Tile Joints mentioned below		
LENGTH (ft)	WIDTH (ft)	THICKNESS (mm)	3 mm	4 mm	5 mm
1	1	10	28	20	16
1	1	20	14	10	8
1	2	10	36	27	22
1.5	1.5	12	34	26	20
2	2	12	45	34	27
2	4	12	60	45	36

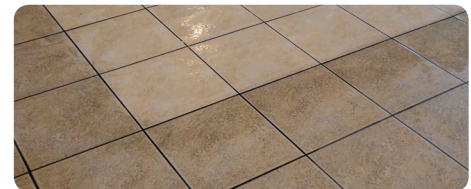
### COLOURS AVAILABLE

## 9 Shades\*



\*Available in 9 brilliant shades

### RECOMMENDED USAGE



## HOW TO APPLY

### APPLICATION PROCESS

APPLICATION PROCEDURE

STEP 1

Before grouting make sure that the tiles are firmly set and adhesive is cured.

STEP 2

Tile joints must be clean and free of oil or any other foreign matter and about 2/3rd of the depth of tile should be available for grouting.

STEP 3

Add 1 kg tile grout to about 300 to 350 ml of potable water and mix till it is free from lumps.

STEP 4

Dampen the surface. Spread the grout using rubber grout float ensuring that no air gaps are left in the joint.

APPLICATION PROCEDURE

STEP 5

Apply the material within 30 minutes of mixing.

STEP 6

Remove excessive grout without disturbing the compactness of the applied material.

STEP 7

Allow to harden for 2-3 hours and then remove excess material with damp (and not well) sponge.

STEP 8

Allow the joint to cure for 24 hours before subjecting it to normal service conditions. In case of exterior joints, protect from direct sunlight / rains for at least 24 hours.

**ADDITIONAL INFORMATION****PRECAUTIONS**

- › Do not use when high chemical, impact, stain resistance, is required or in industrial environment. In such cases, use Asian Paints Epoxy Tile Grout.
- › The actual shade may not match 100 % with that in shade card. Shade card is for indication purpose.
- › When 2 or more bags are required, it is advisable to dry blend the powders first to avoid color variation.

**SAFETY FEATURES**

- › Kindly refer to the MSDS for Asian Paints SmartCare Tile Grout - Cement Based which gives detailed information on safety measures while handling the material
- › Store the bag tightly closed in a cool, dry place
- › Keep out of reach of children and away from eatables.
- › May be harmful if swallowed. In case of ingestion seek immediate medical attention.
- › Wear eye protection during application. In case of contact with eyes, rinse immediately with plenty of water and if required seek medical advice.
- › It is recommended to wear suitable nose pad during surface preparation, mixing, application to avoid dust inhalation.

**TECHNICAL DETAILS**

**a. Form:** Free flowing powder

**b. Color:** As per shade

**c. Mix density:** 1.75 - 2.05 (depending on shade)

**d. Pot Life:** 1 Hour

**e. Curing time:** 24 Hours

**f. Cleaning tools:** with water immediately after use