

PRODUCT CODE - 5639

Stone and Heavy Tile Application

Asian Paints Smart Care Stone and Heavy Tile Adhesive is a single component cement-based polymer modified tile adhesive specially designed for fixing heavy tiles, natural stones, granites and marbles on interior as well as exterior walls and floor.

PRODUCT BENEFITS

Specification

Meets the requirement of IS 15477:2019 and ISO 13007-1:2014 for Tile Adhesives

Easy Application

Single component ready to use material with special additives provides ease of fixing of heavy tiles and natural stones on floor and walls

No Pre-Soaking of Tiles & Water Curing

No need of pre-soaking of tiles and no water curing required post application

Convenient

Hacking of surface is not required during fixing tiles on vertical concrete surfaces

Long Pot Life & Extended Open Time

Makes installation of stone / large tiles easier

Excellent Adhesion

Provides excellent bonding of stones and heavy tiles with surface

Slip Resistant

Provides excellent slip resistance to stones and tiles while installation on wall / floor

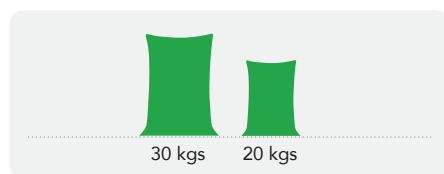
Ready for Use

Stones / tiles become trafficable (ready for use) after 24 hours of fixing



PRODUCT FEATURES

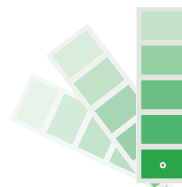
AVAILABLE PACKS



Shelf life: 1 year from the date of manufacture when stored in original packaging under normal dry conditions.

COLOURS AVAILABLE

Grey*



*Please note: Tile Adhesive for Stone and Heavy Tile is a Grey coloured free flowing powder.

COVERAGE

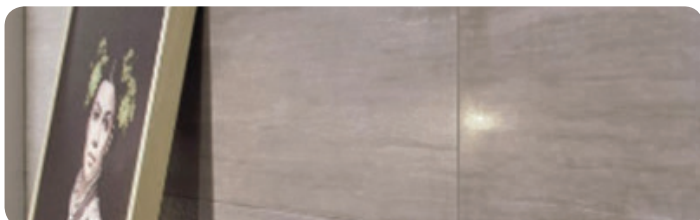


The actual coverage however might vary with the type of surface and its flatness. For adequate coverage ensure that the surface is smooth, clean and devoid of any defects or undulations.

Physical Appearance	Colours Available	Pack Sizes	Shelf Life	Mixing Ratio (With Water)	Min bed thickness required	Coverage
Free Flowing Powder	Grey and White	20 and 30 Kgs	1 Year	23-25%	6-8 mm	1 – 1.25 Sq. Ft/ Kg For 6 mm bed thickness

RECOMMENDED USAGE

Type of Usage	Area of Usage	Types of Substrates	Type of Tiles / Stones	Maximum size* of Tiles can be fixed	Maximum height of Wall to Fix Tiles
Floor	Interior and Exterior	Existing tiles, cement-based screed, concrete slabs and cement terrazzo	Natural stones, granite, marble and heavy vitrified tiles	Upto 4X4 ft.	NA
Wall	Interior and Exterior	Cement based plaster and concrete	Natural stones, granite, marble and heavy vitrified tiles	Upto 2X4 ft.	10 ft.



HOW TO APPLY

APPLICATION PROCESS

APPLICATION PROCEDURE

STEP 1	Surface to be tiled must structurally sound, clean, free for dust, loose particles and any contamination, and should be in SSD** (Saturated Surface Dry) condition. Poor or uneven surfaces should be repaired and made level finish.
STEP 2	Clean the surface of natural stones or heavy tiles to make it free from dust and loose particles.
STEP 3	Take the water in a clean bucket and add Stone and Heavy Tile Adhesive powder slowly with continuous stirring to get a smooth homogenous lump-free paste. Use mechanical mixer to get uniform lump-free consistency. Allow the prepared material to stand for 5 minutes.
STEP 4	Spread the prepared paste over wall as well as on the back side of the heavy tile or stone properly and notch it with the 12 mm notch trowel to get uniform bed thickness of 6-8 mm.

APPLICATION PROCEDURE

STEP 5	Fix Natural Stone or Heavy Tiles on the wall carefully ensuring 100% area contact with tile adhesive and hammer gently with soft mallet to ensure proper bonding. Leave adequate joints between the Natural Stones / Heavy Tiles using spacers.
STEP 6	Clean off excessive adhesive between the joints as well as on the stones or tiles with a damp cloth.
STEP 7	Use mechanical support wherever necessary and leave stones or tiles for 24-48 hours to dry properly.
STEP 8	For best results, use Asian Paints SmartCare Epoxy or Cement Based Tile Grout to fill the joints / gaps of the tiles.

TECHNICAL DETAILS

Conforms IS 15477:2019	Conforms ISO 13007-1:2014	Mix Density	Pot Life	Open Time	Adjustability Time	Curing Time
Type 2T	C2TE	1.8-2.0	2 hours	15-20 minutes	10-15 minutes	24 hours

Specifications for Type-2T Adhesives as per IS 15477:2019

Test Type	Requirements as per IS 15477:2019	Values for Stone & Heavy Tile Adhesive
Tensile Adhesion - Dry Condition (N/mm ²)	Min. 1.0	1.0 – 1.5
Tensile Adhesion - Wet Condition (N/mm ²)	Min. 1.0	1.0 – 1.5
Shear Adhesion - Dry Condition (N/mm ²)	Min. 1.25	>1.25
Shear Adhesion - Wet Condition (N/mm ²)	Min. 1.0	1.0 – 1.5
Shear Adhesion - Heat Ageing (N/mm ²)	Min. 1.0	1.0 – 1.5
Slip (mm) – T	Less than 0.5	< 0.5

Specifications for C2TE Adhesives as per ISO 13007-1-2014

Test Type	Requirements as per ISO 13007-1-2014	Values for Stone & Heavy Tile Adhesive
Tensile Adhesion Strength at Room Temperature	C2 > 1.0 N/mm ²	1.0 – 1.5
Tensile Adhesion Strength under water immersion	C2 > 1.0 N/mm ²	1.0 – 1.5
Tensile Adhesion Strength after heat ageing	C2 > 1.0 N/mm ²	1.0 – 1.5
Tensile Adhesion Strength after freeze thaw cycles	C2 > 1.0 N/mm ²	1.0 – 1.5
Slip (T)	< 0.5 mm	< 0.5

ADDITIONAL INFORMATION

PRECAUTIONS

Do's
<ul style="list-style-type: none"> Always mix powder in water to get uniform lump-free paste Apply adhesive on both substrate and stone / tiles by notch trowel Provide mechanical support for heavy stones / tiles if required
Don'ts
<ul style="list-style-type: none"> Don't fix stones / tiles without applying adhesive on walls Don't fix stones / tiles in extreme low temperatures Don't apply adhesive directly on damp surfaces

SAFETY FEATURES

- Kindly refer to the MSDS for Asian Paints SmartCare Stone and Heavy Tile Adhesive which gives detailed information on safety measures while handling the material
- Store the bag tightly closed in a cool, dry place
- Keep out of reach of children and away from eatables
- May be harmful if swallowed. In case of ingestion seek immediate medical attention
- Wear eye protection during application. In case of contact with eyes, rinse immediately with plenty of water and if required seek medical advice
- It is recommended to wear suitable nose pad during surface preparation, mixing, application to avoid dust inhalation

*For application of large stones/tiles, consult with Asian Paints Technical Team for necessary guidance.

* SSD: Wash the floor / wall with clean water 2-3 hours before applying adhesive to get saturated surface dry (SSD) condition.