

PRODUCT CODE 1B71

## SmartCare Damp Proof Xtreme

Asian Paints SmartCare Damp Proof Xtreme is a fiber reinforced elastomeric liquid applied water proofing membrane. It is formulated with select elastomeric and resilient acrylic polymers and reinforcing synthetic fibers. Upon curing, it forms a thick, seamless, durable membrane thus offering ultimate waterproofing.

### PRODUCT BENEFITS

#### Water proofing

Waterproofing protection of up to 9 bars of positive hydrostatic pressure

#### Crack bridging

Unmatched crack bridging ability due to elastomeric properties

#### High Solar Reflectance

Brilliant white colour and thick coat results in high levels of heat reflectance

#### Adhesion

Strong adhesion to masonry substrates

#### Surface temperature reduction

Provides surface temperature reduction up to 10°C.\* This property is applicable for terraces and only for white shade

#### Use & maintenance

Single pack, easy to apply and simple re-coating

\*Surface temperature reduction: Temperature recorded from 1 pm to 3 pm with the aid of laser guided infrared non-contact thermometer, degree of surface temperature reduction will vary depending upon the surface & weather conditions

\*\*Source of the moisture needs to be treated before application of SmartCare Damp Proof Xtreme.

#### Mechanical strength

Reinforced with synthetic fibers for superior abrasion resistance

#### Anti carbonation

Damp Proof Xtreme system has excellent CO2 diffusion (carbonation) resistance & prevents the corrosion of rebar within the concrete matrix, leading to superior structural protection

#### High Moisture Resistance

Applicable on surfaces with up to 70% moisture\*\*

#### Anti-Efflorescence

Provides excellent efflorescence resistance on exterior walls.

#### Warranty

12 years Waterproofing warranty on Terraces and up to 12 years on vertical surfaces

(Warranty years on vertical surfaces will depend upon top coat used, please refer to warranty booklet for more details)



WATER BASED

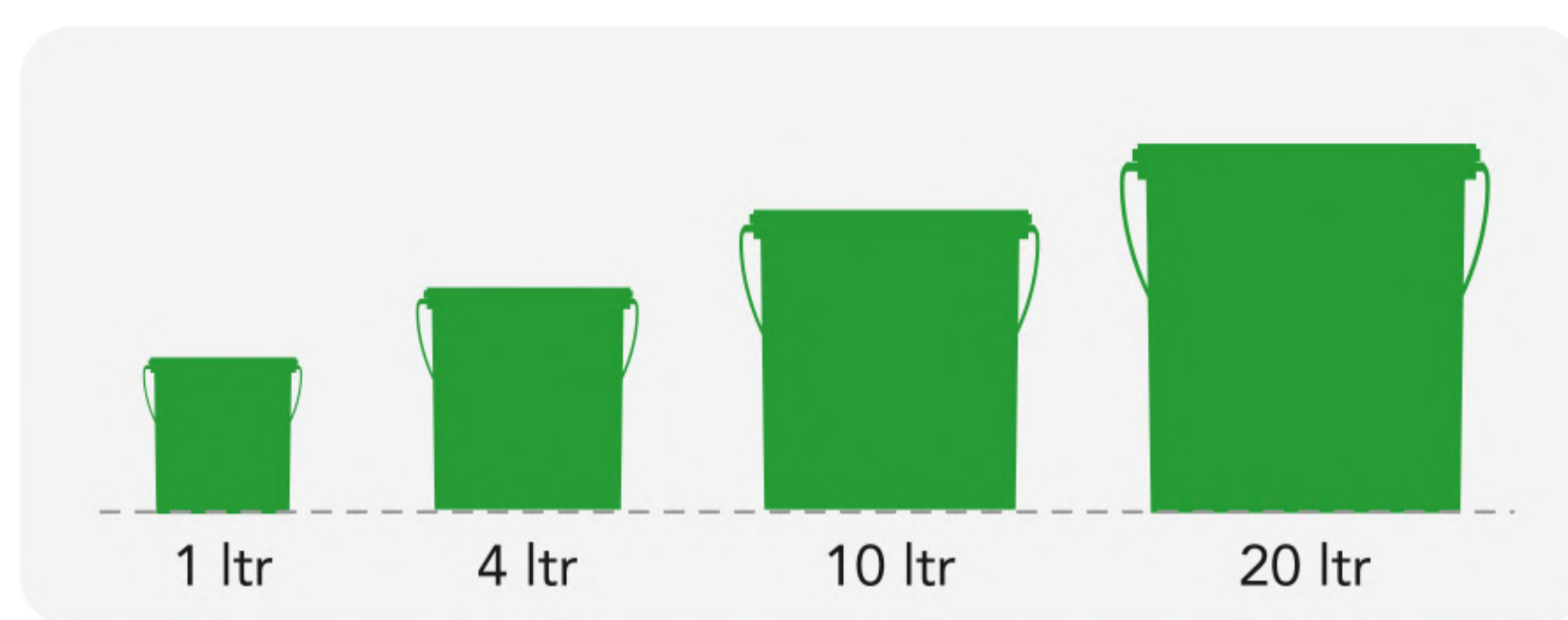
asianpaints

LEAD FREE\* GUARANTEE

\* All Asian Paints products contain no added Lead, Mercury, Arsenic or Chromium from April 2008.

### PRODUCT FEATURES

#### AVAILABLE PACKS



Shelf life: 5 years from date of manufacture in original tightly closed containers away from direct sunlight and excessive heat.

#### COLOURS AVAILABLE

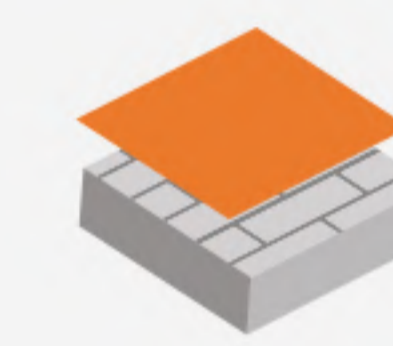
White



#### COVERAGE

##### RECOMMENDED SYSTEM

On RCC or plaster using brush or roller



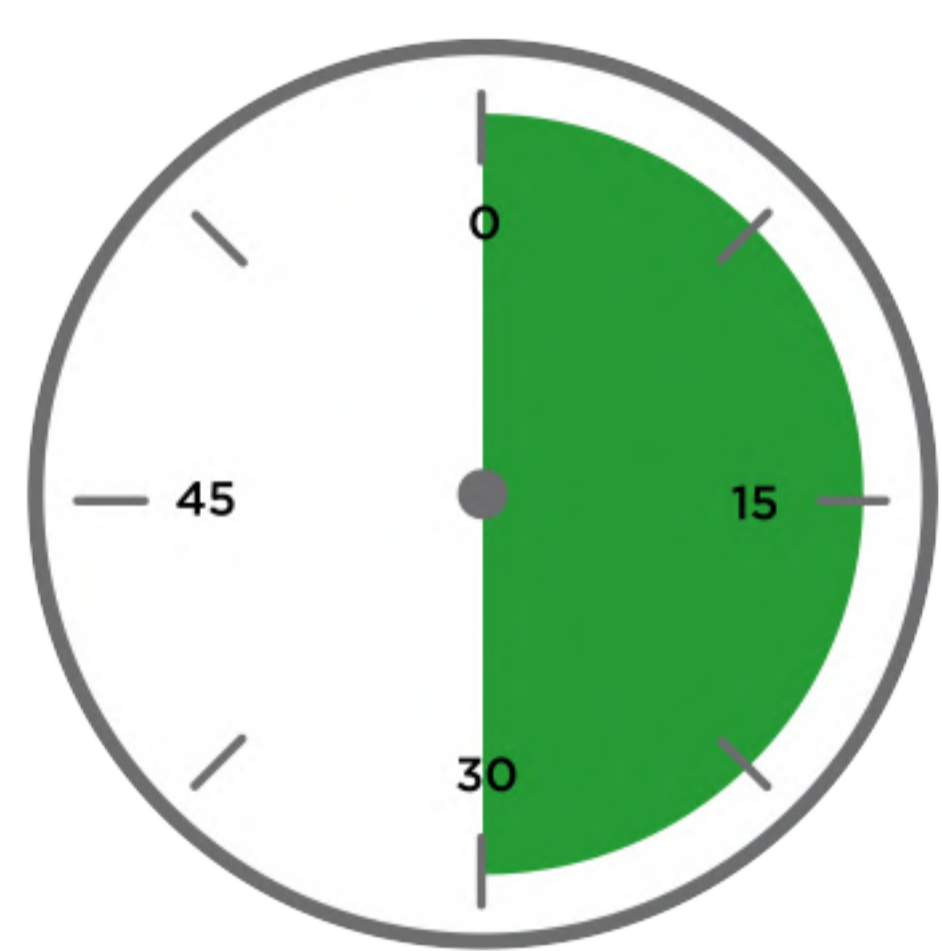
Horizontal Surface 0.93 Sq. mtr/Ltr



##### Vertical Surface

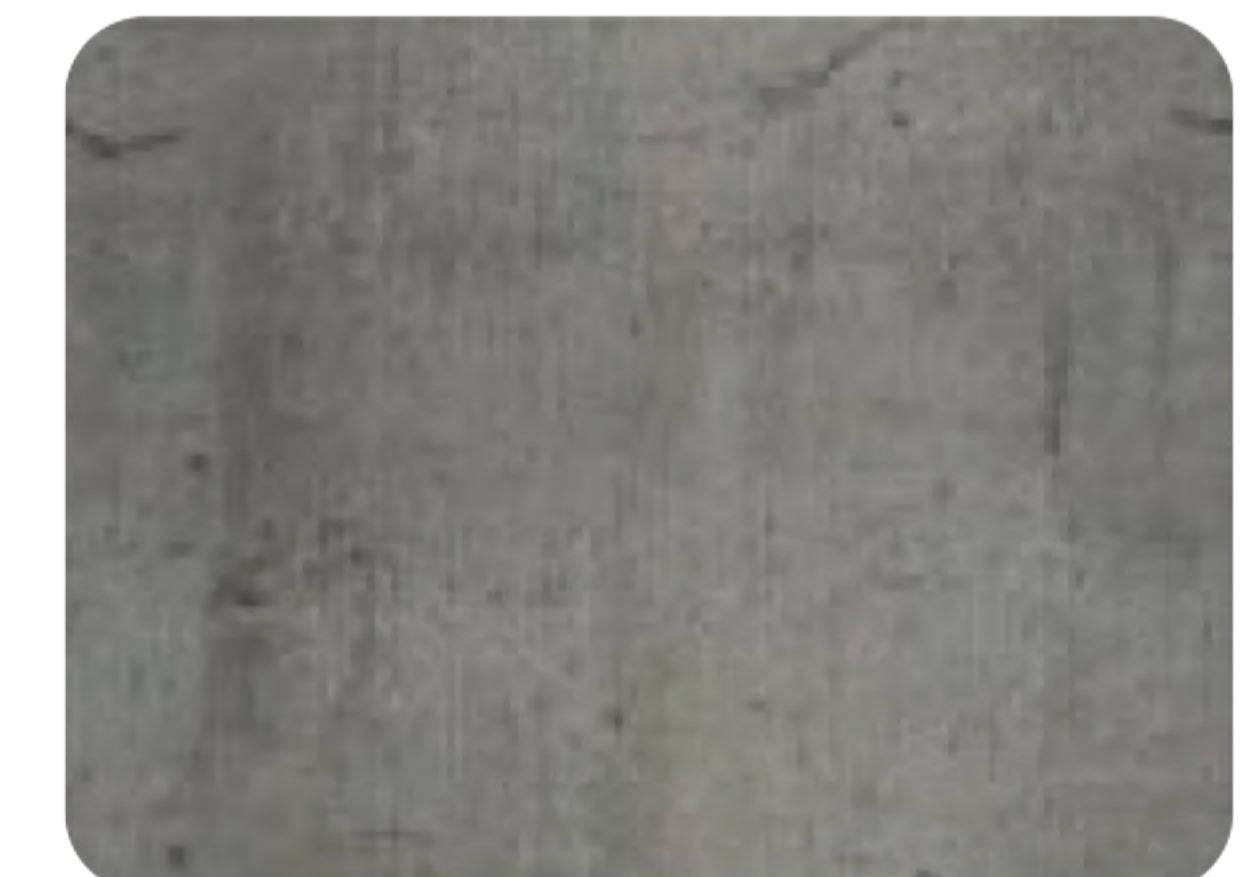
Fresh painting: 2.79 sq.mtr/ltr  
Re-painting: 2.79 – 3.25 sq. mtr/ltr

#### DRYING TIME TO TOUCH



4-6 HOURS

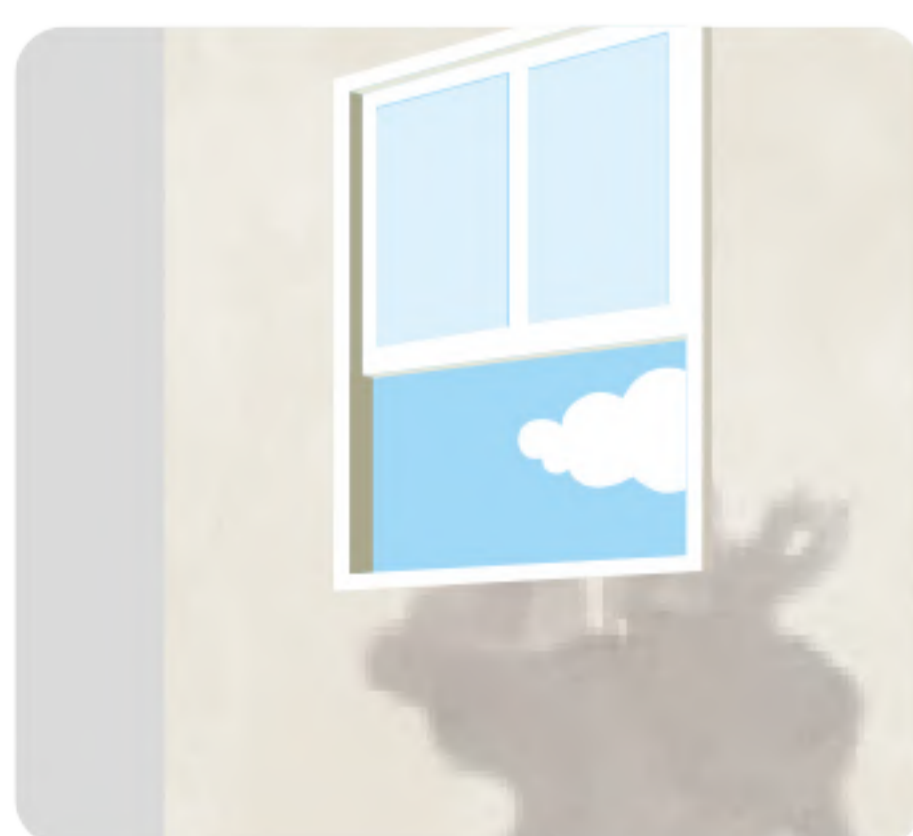
#### RECOMMENDED USAGE



Can be used for building roofs, terraces, parapet, sunshades and exterior vertical walls. It can also be applied on existing IPS, sound brick-bat coba or cementitious waterproofing.

### HOW TO APPLY

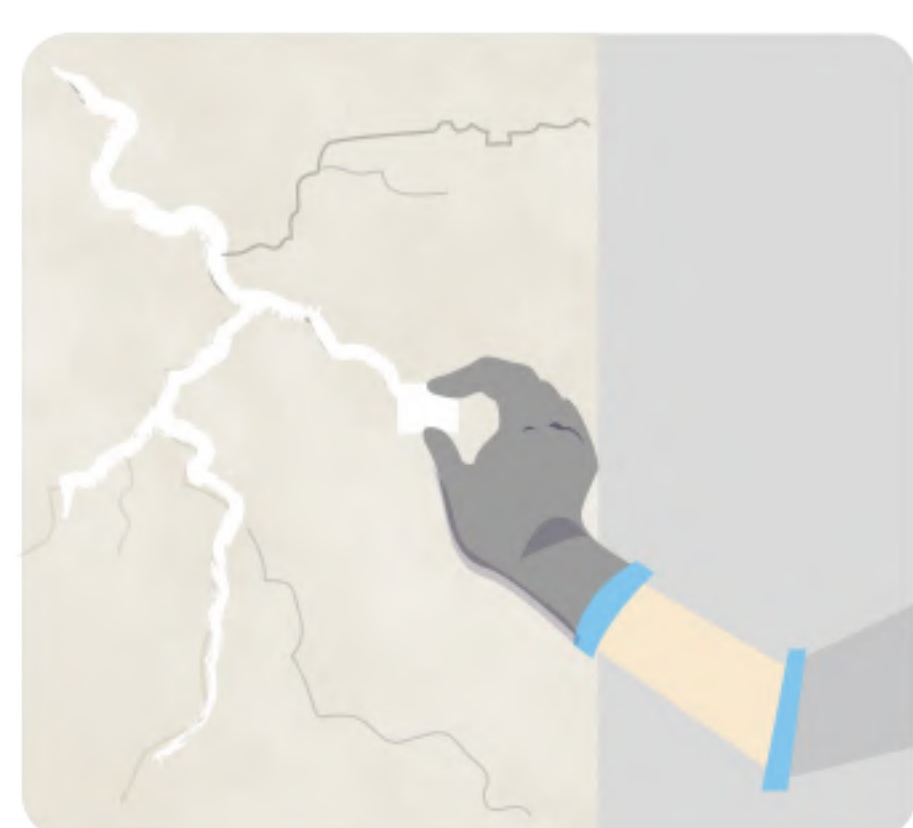
#### PRE PAINTING STEPS



**PLASTER** New masonry surfaces must be allowed to cure completely. It is recommended to allow 28 days as the curing time for new masonry surfaces. The roof must have positive slope/ drainage system to avoid water ponding at places.



**CLEANING** Surface should be free from any loose paint, dust or grease. Remove all existing bitumen coatings completely. It is recommended to use Intense wire brushing, High speed water jet and vacuum cleaner for thorough cleaning of the surface to avoid "Peeling off" problems.



**REPAIRING** The substrate must be checked for its soundness using small hammer. All cracks at corner joints, channels and parapets should be properly treated.



**FILLING FOR CRACKS** For filling cracks upto 3mm use Asian Paints Crack Seal. Bigger cracks, damaged portions and hollow areas must be repaired with polymer modified cement mortars.

#### APPLICATION PROCESS

APPLICATION	CODE	THINNER	DILUTION %	APPLICATION VISCOSITY <sup>1</sup>	RECOATING PERIOD
<b>HORIZONTAL SURFACE</b>					
STEP 1 SELF PRIMING DAMP PROOF XTREME BRUSH	1B71	WATER	30%	N/A	4 - 6 HRS
STEP 2 FIRST COAT WATERPROOFING DAMP PROOF XTREME BRUSH / ROLLER	1B71	N/A	N/A	N/A	4 - 6 HRS
STEP 3 SECOND COAT WATERPROOFING DAMP PROOF XTREME BRUSH / ROLLER	1B71	N/A	N/A	N/A	4 - 6 HRS
<b>VERTICAL SURFACE</b>					
STEP 1 SELF PRIMING DAMP PROOF XTREME BRUSH	1B71	WATER	30%	N/A	4 - 6 HRS
STEP 2 FIRST COAT WATERPROOFING DAMP PROOF XTREME BRUSH / ROLLER	1B71	N/A	N/A	N/A	4 - 6 HRS
STEP 3 FIRST COAT PROTEK / DURALIFE TOP COAT BRUSH / ROLLER	1090	WATER	40%	N/A	4 - 6 HRS
STEP 4 SECOND COAT PROTEK / DURALIFE TOP COAT BRUSH / ROLLER	1090	WATER	40%	N/A	4 - 6 HRS

1. As measured through a Ford cup. 2. Apply an additional coat of Damp Proof Xtreme in case of severe dampness. 3. For best results, strictly follow the dilution and forced coverage requirements.



## ADDITIONAL INFORMATION

### POST PAINTING CARE

For the best performance of the paint, ensure proper washing and cleaning of all algal and fungal growth, if any, at regular intervals of six months.

### PRECAUTIONS

- › Repair the hallow surface area before applying Damp Proof Xtreme coat.
- › For miscellaneous surface like tiling, smooth and glossy cementitious surface, product should be used with Asian Paints SmartCare Terrace Tile primer.
- › For horizontal surfaces, use Asian Paints SmartCare Joints Tapes at all joints & corners for better reinforcement.
- › For oily, existing failure coating surface, carry patch tests to check adhesion of product to substrate.
- › The forced coverage leads to long term performance hence it is recommended to ensure coverage as per datasheet only.
- › Do not apply during rains or extreme temperatures.
- › Not recommended for rain water harvesting purpose.
- › Avoid abuses which may lead to puncturing of membrane.
- › Ensure that the product is applied at least 6 inches inside the drain pipe.
- › For best results, apply coating on parapet walls as well.

### TECHNICAL DETAILS

- a. Form:** Ready to use viscous liquid
- b. Mix Density:** 1.16 - 1.24
- c. Application temperature:** 5°C to 35°C

### SAFETY FEATURES

- › Kindly refer to the MSDS for Asian Paints SmartCare Damp Proof Xtreme which gives detailed information on safety measures while handling the paint, which is available on request.
- › Store the container with the lid tightly closed in an upright position, in a cool, dry place
- › Keep out of reach of children and away from eatables.
- › May be harmful if swallowed. In case of ingestion seek immediate medical attention.
- › Wear eye protection during application. In case of contact with eyes, rinse immediately with plenty of water and seek medical advice.
- › In case of skin contact immediately wash skin with soap and plenty of water. Get medical attention if irritation develops or persists.
- › Do not breathe vapour or spray. It is recommended to wear suitable nose pad during sanding and surface preparation to avoid dust inhalation
- › Do not pour leftover paint down the drain or in water courses.
- › In the event of spills, contain spillage using sand or earth.
- › No added Lead, Mercury or Chromium compounds.

## TECHNICAL DATA

Performance Characteristics as per ASTM standards		Coverage [sq.ft./L]	Values for SmartCare Damp Proof Xtreme
1	Pull off Adhesion strength [ ASTM D 4541] Dry concrete	10	Minimum 1.5 MPa (S/F) MPa
2	Tensile strength [ASTM D 2370/98: 14 days]	10	1.5 +/- 0.15 MPa
		30	1.8 +/- 0.18 MPa
3	%Elongation [ASTM D 2370/98: 14 days]	10	380 ± 10 % (Horizontal),
		30	220 ± 10 % (Vertical)
4	Crack Bridging Ability [ASNZ 4548, 14 days]	10	3.5 ± 0.35 mm for Horizontal
		30	1.25 ± 0.125 mm for Vertical
5	Water Vapour Transmission [ASTM E96-2022]	10	4.1 g/m <sup>2</sup> /day
8	% Solids [ ASTM C 1250]	--	54 to 60% @ 120° C/1 hr
9	Overcoating time interval	--	4-6 Hrs @ 30° C
10	Weight per liter/Specific Gravity -IS 101	--	1.19 to 1.32 @30° C
11	Temperature reduction [In house method]	10	Upto 10° C

These value ranges have been observed in controlled lab test conditions.