

PRODUCT CODE 1B18

SmartCare Tile Coat

SmartCare Tile Coat is a single component, ready to use, UV stable, clear waterproof coating for terraces with mosaic tiles on horizontal surfaces.



WATER BASED

LEAD FREE* GUARANTEE

* All Asian Paints products contain no added Lead, Mercury, Arsenic or Chromium from April 2008.

PRODUCT BENEFITS

Warranty

2 years of waterproofing warranty on mosaic tiles on terraces

Waterproofing

Waterproofing protection of upto 2 bars of hydrostatic pressure

Clear Coating

The transparent film maintains the beauty of the mosaic tiled surface

Easy Application

Single pack, self-priming and easy to apply

Crack Bridging

Good crack bridging ability due to elastomeric properties

Adhesion

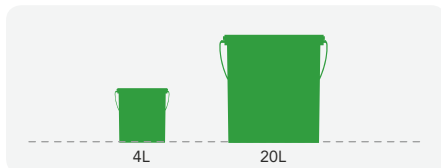
Strong adhesion to the mosaic tiled substrate

Excellent Resistance

Excellent resistance against UV, infrared rays, algal and fungal growth

PRODUCT FEATURES

AVAILABLE PACKS



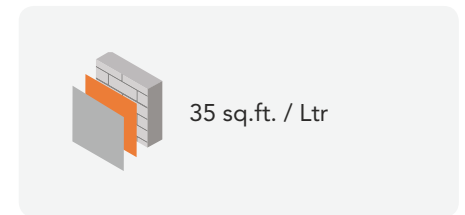
Shelf life: 3 years from date of manufacture in original tightly closed containers away from direct sunlight and excessive heat.

COLOURS AVAILABLE

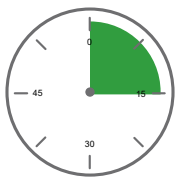
Clear



COVERAGE



DRYING TIME TO TOUCH



2-3 HOURS

RECOMMENDED USAGE



Can be used on mosaic tile surfaces on building roofs and terraces

HOW TO APPLY

Surface Preparation:

- Prepare the surface by cleaning and ensure that it is free of dust, oil, grease, grime and loose particles etc.
- Remove any loosely adhered tile or chips, if any
- The substrate must be checked for its soundness. Small cracks (3mm or less) should be opened, cleaned & filled with SmartCare Crack Seal. Bigger cracks, damaged portions & hollow areas must be repaired with polymer modified screed.

Application Method:

- Before application, mix the material well with mechanical mixer to get homogeneous brushable consistency.
- Apply 1st coat of SmartCare Tile coat with brush followed by roller. Allow it to dry completely for 2-3 hours.
- Apply 2nd coat of SmartCare Tile coat in the direction perpendicular to the first coat and allow it to dry for 2-3 hours.
- Apply 3rd coat in the direction of the first coat and allow it to dry for 3 days for complete curing
- Achieve a forced system coverage of 3.25 sq. mtr./L or 35 sq.ft./L in 3 coats.

Post Painting Care – For the best performance of the coat, ensure proper washing only with water and cleaning of all algal and fungal growth, if any, at regular intervals of six months.

ADDITIONAL INFORMATION

TECHNICAL DETAILS

Form: Ready to use viscous liquid

Density: 1.02 +/- 10%

Application Temperature: 18 to 40 degree C

Solid %: 40 +/- 3%

Crack Bridging Ability: 0.4 mm +/- 10% as per ASNZ 4548 at recommended coverage of 35 sq.ft./L

Adhesion to substrate: >1.5 MPa, as per ASTM D 4541

PRECAUTIONS

- > It should not be applied while direct contact with water. The surface coated with Tile coat should be allowed to dry completely for at least 3 days without water contact, after which foot traffic can commence.
- > The product is specifically designed for foot traffic and not for vehicle, point load or equipment or machinery movement, which may rupture the coating.
- > All the corners, joints, protrusions, and outlets should be coated with two extra coats of Tile Coat.
- > For ceramic/vitrified tiles, itching with cerium oxide powder should be done as part of surface preparation for smoother application and proper adhesion.
- > Use Asian Paints SmartCare Joints Tapes at all joints & corners for better reinforcement.
- > The forced coverage leads to long term performance hence it is recommended to ensure coverage as per datasheet only.
- > Do not apply during rains or extreme temperatures.
- > Not recommended for rain water harvesting purpose.
- > Avoid abuses which may lead to puncturing of membrane.

SAFETY FEATURES

- > Kindly refer to the MSDS for Asian Paints SmartCare Tile Coat which gives detailed information on safety measures while handling the paint, which is available on request.
- > Store the container with the lid tightly closed in an upright position, in a cool, dry place
- > Keep out of reach of children and away from eatables.
- > May be harmful if swallowed. In case of ingestion seek immediate medical attention.
- > Wear eye protection during application. In case of contact with eyes, rinse immediately with plenty of water and seek medical advice.
- > In case of skin contact immediately wash skin with soap and plenty of water. Get medical attention if irritation develops or persists.
- > Do not breathe vapour or spray. It is recommended to wear suitable nose pad during sanding and surface preparation to avoid dust inhalation
- > Do not pour leftover paint down the drain or in water courses.
- > In the event of spills, contain spillage using sand or earth.
- > No added Lead, Mercury or Chromium compounds.