

PRODUCT CODE 5675

SmartCare Cemboost 200

Asian Paints SmartCare Cemboost 200 is an integral liquid waterproofing compound with advanced formulation and superior plasticizing additives for cement concrete, mortar and plasters. The product is formulated with selected surface active plasticizing agents, chemicals & additives which make the cement concrete/ plaster mix cohesive and upon curing, reduces water permeability.

PRODUCT BENEFITS

Water Impermeability

Improves waterproofing of concrete & hence increases durability

Compressive Strength

Imparts higher compressive strength even at more than recommended dosage

Compatibility

Mixes easily with concrete/mortar mixes

Shrinkage

Resists crack formation due to drying shrinkage

Workability

Improves workability of freshly mixed cement concrete

Corrosion Resistance

Resists corrosion of reinforcement steel due to water and chloride ions penetration

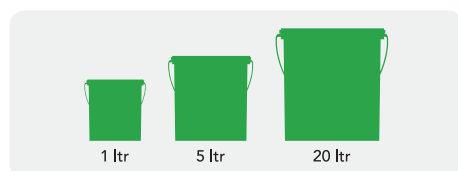


WATER BASED

LEAD FREE*GUARANTEE
* All Asian Paints products contain no added Lead, Mercury, Arsenic or Chromium from April 2008.


PRODUCT FEATURES

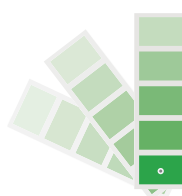
AVAILABLE PACKS



Shelf life: If stored in original sealed container, 2 years from the date of manufacturing

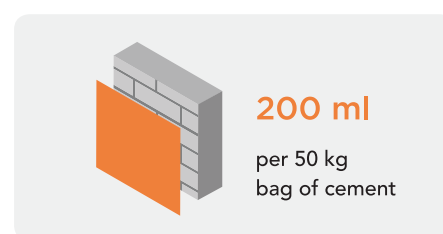
COLOURS AVAILABLE

Clear*

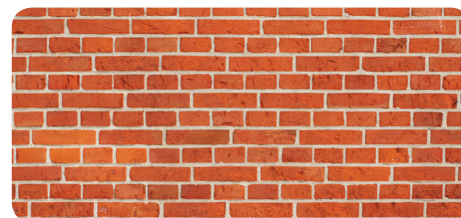
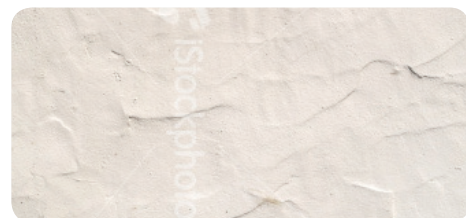


*Please note: SmartCare Cemboost 200 is an Integral waterproofing liquid

RECOMMENDED DOSAGE



RECOMMENDED USAGE



Waterproofing of concrete and sand - cement mortars used in water tanks & water retaining structures, basements, roof slabs and screeds, external and internal plaster, bathrooms, sumps and drains, brick laying mortar

HOW TO APPLY

APPLICATION PROCESS

APPLICATION PROCEDURE

STEP 1 Charge cement and aggregates to concrete mixer as per the mix design

STEP 2 Mix in dry state for 1-2 minutes

STEP 3 Add 50 to 60 % of mixing / gauging water

STEP 4 Mix for 2-3 minutes

STEP 5 Stir the Cemboost 200 container well before use

STEP 6

Cemboost 200 needs to be added as per the recommended dosage into the remaining mixing / gauging water, then add to concrete mixer and mix for another 2-3 minutes

STEP 7

Place the concrete or apply plaster as needed

STEP 8

Cure the applied mortar or concrete as per good construction practices

ADDITIONAL INFORMATION

POST PAINTING CARE

For the best performance of the paint, ensure proper washing and cleaning of all algal and fungal growth, if any, at regular intervals of six months.

TECHNICAL DETAILS

- a. Form:** Liquid having very low viscosity
b. Density: 1.00+/- 0.1
c. Standard Compliance: Meets and exceeds requirement of IS 9103 for water reduction & IS 2645 for water impermeability

PRECAUTIONS

- > Do not apply when ambient temperature is less than 10°C or if the temperature might drop to this level within 4 hrs of application.
- > Do not over-thin or over-extend the brush.
- > Do not dispose of excess material over natural vegetation.
- > Avoid contact with bare skin. In case of contact, wash the affected part immediately with water.
- > Do not add Cemboost 200 directly to cement or dry mix. Always add to gauging water. Maintain water cement ratio as low as possible.

SAFETY FEATURES

- > Kindly refer to the MSDS for Asian Paints SmartCare Cemboost 200 which gives detailed information on safety measures while handling the paint, which is available on request.
- > Store the container with the lid tightly closed in an upright position, in a cool, dry place
- > Keep out of reach of children and away from eatables.
- > May be harmful if swallowed. In case of ingestion seek immediate medical attention.
- > Wear eye protection during application. In case of contact with eyes, rinse immediately with plenty of water and seek medical advice.
- > In case of skin contact immediately wash skin with soap and plenty of water. Get medical attention if irritation develops or persists.
- > It is recommended to wear suitable nose pad during sanding and surface preparation to avoid dust inhalation.
- > In the event of spills, contain spillage using sand or earth.
- > No added Lead, Mercury or Chromium compounds.
- > Non ammalable.

TECHNICAL DATA

PROPERTIES	SPECIFICATIONS	RESULTS
Appearance		Free owing liquid
Colour		Wine Red
Sp. gr. @ 25° C		1.05 - 1.070
Non volatile content		13.5 - 14.5 %
pH Value		9 - 13
Setting time, minutes	IS : 2645 : 2003	30 - 600
Chloride Content	IS : 2645 : 2003	Max 2.00%
Water permeability	IS : 2645 : 2003	Passes
Compressive strength N / mm ²	IS : 2645 : 2003	As per the standard