

PRODUCT CODE 5482

SmartCare Bathroom Waterproofing Membrane

Asian Paints SmartCare Bathroom Waterproofing Membrane is a triple-layered, tough, elastic and alkali resistant sealing laminated film, fixed below tiles using SmartCare Tile Adhesives for providing long lasting bathroom waterproofing.



PRODUCT BENEFITS

Superior Technology

Triple layered PP-PE-PP (Polypropylene–Polyethylene–Polypropylene) membrane with high tear strength.

Waterproofing

Water impervious membrane.

Excellent Adhesion

High tensile bond strength connection with SmartCare Tile Adhesives.

Durability

Tough and Alkali resistant.

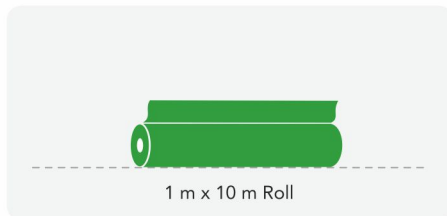
LEAD FREE* GUARANTEE



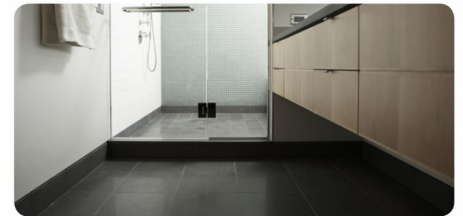
* All Asian Paints products contain no added Lead, Mercury, Arsenic or Chromium from April 2008.

PRODUCT FEATURES

AVAILABLE PACKS



AREAS OF USAGE



For waterproofing of walls and floors in wet areas like bathrooms.

HOW TO APPLY

APPLICATION PROCESS



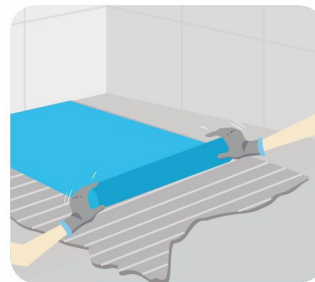
SURFACE PREPARATION

1. Surface must be clean, free from contamination, structurally sound and prior to membrane application it should be in Saturated Surface Dry (SSD) condition.
2. Suitable surfaces include concrete, cement-sand screed or plaster.



MATERIAL PREPARATION

1. Cut the membrane in an appropriate size as per the dimensions of the bathroom floor. The membrane should be cut such that 0 - 0.45 m of vertical wall and corner surfaces can be covered. It has to be fixed on all fillet joints and horizontal areas, taking care that a minimum 2 inch overlap is maintained in both areas. In case of shower areas etc, the wall that is subject to constant water contact should also be covered with the membrane.
2. An appropriate hole needs to be provided in the membrane that ensures no gap is left around the drain/nhani trap.
3. Pour 2.5 Litres of SmartCare Multi-purpose Polymer in a clean bucket, add 5 - 5.5 Litres of potable water to it and stir it well.
4. Add the SmartCare Tile Adhesive for Normal Application with continuous stirring to get a smooth homogenous paste that is free from lumps.



METHOD OF APPLICATION

1. Spread the material on the floor or wall using a trowel. Do not spread the material in more than 1 sq. m. of area at a time.
2. Comb the adhesive using a notched trowel to get a bed of 3-6 mm thickness.
3. Fix the membrane on the trowelled bed firmly, ensuring 100% contact between the membrane and tile adhesive.
4. Apply a second coat of tile adhesive with a plain trowel achieving a thickness of approximately 1 mm.



FINISHING

1. After 24 hours of curing, apply tiles using SmartCare Tile Adhesives as per their standard application procedure.
2. Leave adequate & desirable joints between tiles by using spacers and for best results, use Asian Paints cement or epoxy based tile grouts to fill these joints.

ADDITIONAL INFORMATION

TECHNICAL DETAILS

- a. **Appearance:** 3 ply membrane – PP/PE/PP
- b. **Colour:** Blue
- c. **Width:** 1 meter
- d. **Length:** 10 Meters
- e. **Weight:** Approx. 280 gms/sq.m
- f. **Thickness:** 550 microns
- g. **Elongation:** 65%
- h. **Tensile strength, N/15mm:** L – 120 & T- 55
- i. **Water Resistance:** Impermeable at 7 Bars
- j. **Bond with 2K Tile adhesive:** 0.5 Mpa

PRECAUTIONS

- › Protect finished work from traffic until fully cured.
- › When fixing the waterproofing membrane ensure that corners should be fixed first, followed by fillet joints and the horizontal area.
- › Do not apply directly on Damp Surfaces.
- › Do not use on wood or metal surfaces.
- › Use mechanical support, when required.
- › Grouting should not be done for at least 24 hours.
- › Store the membrane in a cool and dry place.

SAFETY FEATURES

General safety features pertaining to all Asian Paints products are applicable.