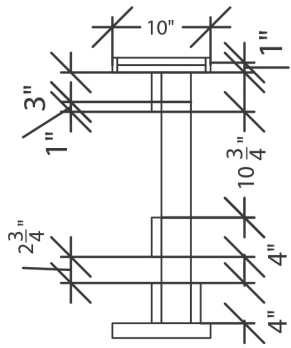
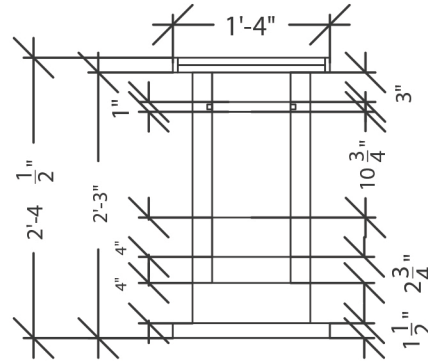


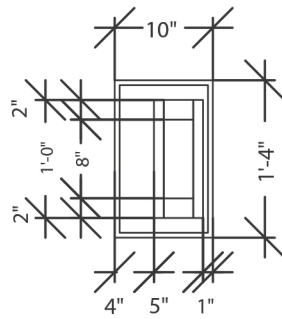
SOFA SIDE TABLE



elevation



side elevation



plan



MATERIALS REQUIRED:

1. Hard Wood Old BTC plank- 1'-4"(l) x 10"(w) x 1 1/2"(d)
2. Hard Wood Old BTC plank- 2'-2"(l) x 4"(w) x 2"(d) - 2 pcs
3. Hard Wood Old BTC plank- 1'-4"(l) x 9"(w) x 1/2"(d) - 4 pcs
4. Pre-cut River washed black granite- 1'-3"(l) x 9"(w) - 1 pc
5. Marine Plywood- 18mm - 1 sheet
6. Carpentry Tools
7. Asian Paints TruGrip Ultra
8. Asian Paints Loctite Tough X
9. Asian Paints Clear Glossy PU

STEPS:

1. Make the base of Sofa Side Table as per the dimensions mentioned in the drawing.
2. Cut the verticals of Sofa Side Table as per the dimensions in the drawing.
3. Cut 1 piece 1" hard wood of size 9" x 4" for the shelf and fix the same to the wooden verticals using the tongue and groove joint with Asian Paints True Grip Ultra and nails.
4. Fix the back support of the Sofa Side Table to its verticals, using Asian Paints TruGrip Ultra.
5. Join the black granite to the plywood using Asian Paints Loctite Tough X and add a 1 1/2" x 1/2" wooden lipping patti on all the four sides of the top to secure the granite.
6. Fix the side table top to the base, using Asian Paints TruGrip Ultra and nails.
7. Finish the entire piece using Asian Paints Clear Glossy PU.

