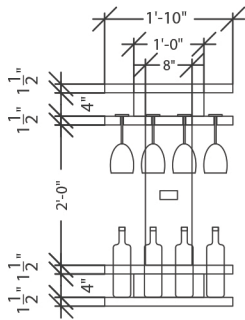
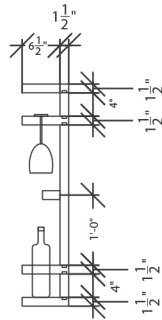


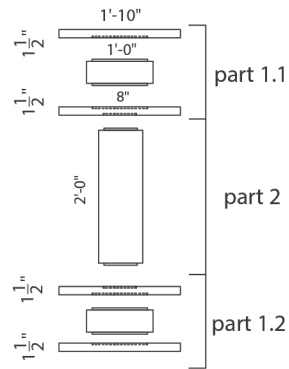
WINE AND GLASS RACK



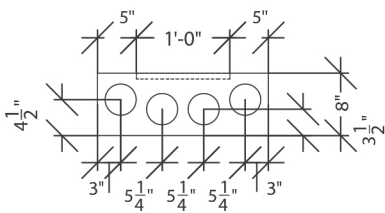
elevation



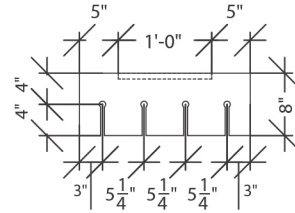
side elevation



working drawing:
individual parts



wine bottle shelf plan



wine glass shelf plan



MATERIALS REQUIRED:

1. Hard wood Old BTC plank- 6'(l) x 8" (w) x 1.5" (d) – 2 no.
2. Hard wood Old BTC plank- 12" (l) x 12" (w) x 1.5" (d) – 1 no.
3. Carpentry Tools
4. 3.5" paana with drill machine
5. Asian Paints TruGrip Ultra
6. Asian Paints Clear Matt PU

STEPS:

1. Cut the wooden planks as per the dimensions mentioned in the drawing.
2. Mark 4" circles on the 22"x 8" x 1.5" wooden plank and cut the same using the 3.5" paana.
3. Similarly make markings for the wine glass slits on the 22"x 8" x 1.5" wooden plank and cut the same using a cutter machine.
4. Fix the wooden planks as shown in the drawing using tongue and groove joint with the help of Asian Paints TruGrip Ultra and secure the same with nails.
5. Finish the entire piece with Asian Paints Clear Matt PU.

