

PRODUCT CODE 0079

Asian Wall Putty

Asian Paints Asian Wall Putty is a white cement based product with redispersible polymer and functional additives for application on interior and exterior rough plasters to give a smooth finish.

PRODUCT BENEFITS

1. Provides smooth and uniform finish to rough plasters
2. Good Workability
3. Does not require curing with water
4. Good water resistance
5. Good Tensile Adhesion Strength, Compressive Strength and Flexural Strength
6. Controlled water vapour permeability
7. Excellent abrasion resistance
8. Resists growth of algae and fungi on wall
9. Good intercoat adhesion to emulsion paints

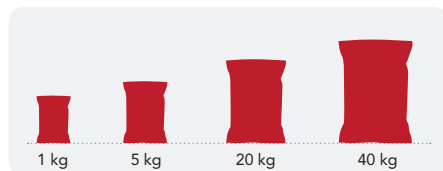


asianpaints
LEAD FREE GUARANTEE

* All Asian Paints products contain no added Lead, Mercury, Arsenic or Chromium from April 2008.

PRODUCT FEATURES

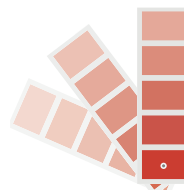
AVAILABLE PACKS



Shelf Life: 1 year from date of manufacture in original tightly sealed sacks away from direct sunlight and excessive heat

COLOURS AVAILABLE

White*



*Please note: Asian Wall Putty is an undercoat

COVERAGE

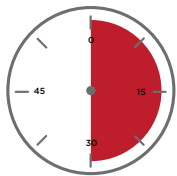
On rough masonry surface by putty knife



2 COATS

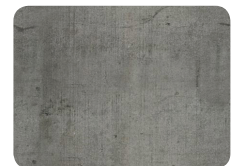
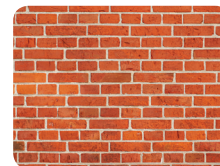
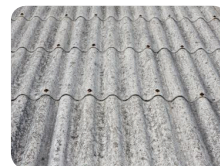
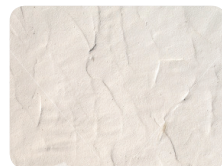
10 - 15 sq.ft/kg
for upto 1.5 mm
thickness in 2 coats

DRYING TIME TO RECOAT



6-8 HOURS

RECOMMENDED USAGE



It can be used on all types of exterior cement plasters/interior walls, asbestos sheets, concrete etc

HOW TO APPLY

PRE PAINTING STEPS



PLASTER New masonry surfaces must be allowed to cure completely for best results. It is recommended to allow 28 days as curing time for new masonry surfaces.



CLEANING Ensure that surface is completely free from all dirt, loosely held plaster, powdery residue, oil, grease or any other contamination. Any previous growth of fungus, algae or moss needs to be removed thoroughly by vigorous wire brushing and cleaning with water. One coat of SmartCare BioBlock is recommended to prevent further growth of algae, fungus or moss.



FILLING FOR CRACKS For filling cracks upto 3mm use Asian Paints Smart Care Crack Seal.



FILLING FOR HOLES & DENTS In case of dents and holes use a mixture of white cement and fine sand in the ratio 1:3



PRE WETTING Pre wet the surface with water before application of 1st coat of Filling Putty

APPLICATION PROCESS

APPLICATION	CODE	THINNER	DILUTION %	APPLICATION VISCOSITY ¹	RECOATING PERIOD
STEP 1 SANDING	SAND THE SURFACE WITH EMERY PAPER 180 AND WIPE CLEAN				
STEP 2 PRE WET THE SURFACE	PRE WET THE SURFACE BEFORE APPLICATION OF 1ST COAT OF ASIAN WALL PUTTY				
STEP 3 FIRST COAT ASIAN WALL PUTTY KNIFE / TROWEL	0079	WATER	40% - 50%	N/A	6 - 8 HRS
STEP 4 SECOND COAT ASIAN WALL PUTTY KNIFE / TROWEL	0079	WATER	40% - 50%	N/A	6 - 8 HRS
STEP 5 PRIMER AND EMULSION COAT	APPLY A COAT OF PRIMER FOLLOWED BY 2 - 3 COATS OF EMULSION				

1. As measured through a Ford cup.

2. Recoat period is quoted for 25°C and 50% Relative Humidity, these may vary under different conditions.

ADDITIONAL INFORMATION

POST PAINTING CARE

It is important to apply a coat of Exterior Wall Primer or SmartCare Primer over Asian Wall Putty before application of emulsion.

TECHNICAL DETAILS

a. Drying time: Surface dry time 30 min

b. Sheen levels: NA

c. Flash point IS101/1987 Part 1, Sec 6: NA

d. Stability of thinned paint: To be used within 45 minutes

PRECAUTIONS

- › Do not apply the material without pre - wetting the surface for the 1st coat
- › Ensure the material is mixed homogeneously with water and allowed to stand for 5-10 mins before application
- › Do not sand the material vigorously with Emery Paper otherwise it will reduce the strength of the material
- › Do not apply the material to fill cracks
- › Though the material is non-toxic, care should be taken to avoid dust inhalation while mixing and handling

SAFETY FEATURES

- › Kindly refer to the MSDS for Asian Paints Asian Wall Putty which gives detailed information on safety measures while handling the paint.
- › Keep out of reach of children and away from food, drink
- › May be harmful if swallowed. In case of ingestion seek immediate medical attention.
- › Wear eye protection during application. In case of contact with eyes, rinse immediately with plenty of water and seek medical advice.
- › In case of skin contact immediately wash skin with soap and plenty of water. Get medical attention if irritation develops or persists.
- › It is recommended to wear suitable nose pad during sanding and surface preparation to avoid dust inhalation
- › Do not pour leftover paint down the drain or in water courses.
- › In the event of spills, contain spillage using sand or earth.
- › Safety Data Sheet available on request.
- › No added Lead, Mercury or Chromium compounds