

PRODUCT CODE 0028

## Royale Luxury Enamel

Royale Luxury Enamel is a revolutionary water based enamel that provides a smooth, luxurious finish to your doors, windows, gates, grills and interior wood. It is a safe, odour-free enamel with excellent washability and durability.

### PRODUCT BENEFITS

#### High Gloss Finish

Royale Luxury Enamel gives you a High Gloss finish which is higher than any other water based enamel present in the market.

#### Low Odour Enamel

Regular solvent enamels leave a pungent odour in your home for weeks. Royale Enamel is a low odour enamel and does not have this problem. You won't even realize that your house is being painted.

#### Anti Fungal

The Biopack in Royale Luxury Enamel protects surfaces from Black spots and retains beauty of your house!

#### High Washability

Royale Luxury Enamel provides you more than 100000 wash cycles which means it is the perfect enamel for high traffic wood & metal surfaces.

#### Safer Enamel

Royale Enamel is the only Enamel which bears the Asian Paints Green Assure mark. Thus, it conforms to the international environmental and safety standards of GS-11 including - Low VOC standards and the absence of harmful chemicals.

#### Non Yellowing

Regular enamels yellow over time. Royale Enamel has an added non-yellowing feature which prevents this and ensures your shades remain the same for years.

#### Quick Drying

Royale Enamel becomes touch dry in approximately 30 minutes. Painting with Royale Enamel can be completed up to twice as fast as compared to regular solvent enamels.



WATER BASED

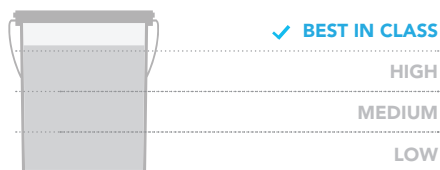


Green Assure from Asian Paints is more than just VOC (Volatile Organic Compounds).

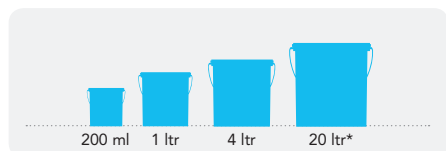
\*FOR MORE INFORMATION LOG ON TO WWW.ASIANPAINTS.COM

### PRODUCT FEATURES

#### WASHABILITY



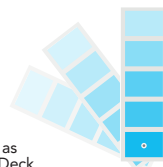
#### AVAILABLE PACKS



Shelf life: 3 years from date of manufacture in original tightly closed containers away from direct sunlight and excessive heat.  
\*Only available in Superwhite Base

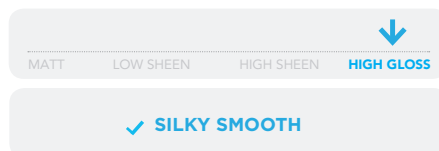
#### COLOURS AVAILABLE

1472\*



\*Currently available in 1400+ shades as per Asian Paints Colour Spectra Fan Deck.

#### FINISH



Refer to sheen levels in technical details

#### COVERAGE

On smooth masonry surface by brushing



\*\*Actual coverage may vary from quoted coverage due to factors like method & condition of application, surface roughness and porosity.

### HOW TO APPLY

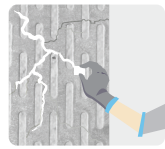
#### PRE PAINTING STEPS



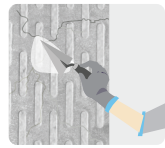
**PLASTER** New masonry surfaces must be allowed to cure completely. It is recommended to allow 28 days as curing time for new masonry surfaces.



**CLEANING** Surface should be free from any loose paint, dust or grease. Growths of fungus, algae or moss should be removed by wire brushing and water. In case of areas having excessive dampness use Asian Paints DampBlock to limit further dampness. When the underlying surface exhibits chalkiness, in spite of thorough surface cleaning, use Asian Paints SmartCare Exterior Sealer.



**FILLING FOR CRACKS** For filling masonry upto 3mm use Asian Paints SmartCare Crack Seal.



**FILLING FOR HOLES & DENTS** In case of dents and holes use Asian Paints Acrylic Wall Putty or white cement and fine sand in the ratio 1:3

**Asian Paints Royale Luxury Enamel should not be applied on surfaces/substrates that are subjected to continuous seepage or dampness.**

#### PAINT APPLICATION PROCESS

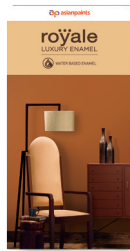
APPLICATION	CODE	THINNER	DILUTION %	APPLICATION VISCOSITY <sup>1</sup>	RECOATING PERIOD
STEP 1 SANDING (MASONRY/ WOOD/ METAL) SAND THE SURFACE WITH SAND PAPER 180 FOLLOWED BY SAND PAPER 320 AND WIPE CLEAN					
ROYALE LUXURY ENAMEL WOOD & METAL BASECOAT (WOOD/ METAL) ROYALE WALL BASECOAT (MASONRY)	0027 0027 0025	WATER	45 - 55, NO DLUTION 50 - 60	BRUSH 13 - 15 NA BRUSH 20 - 22	4 - 6 HRS
STEP 3 WOOD FILLER (WOOD)/ ACRYLIC WALL PUTTY ( WALL) KNIFE PASTE FILLER (METAL)	1054 1354 0016	WATER MTO	BASED ON REQUIREMENT	BASED ON REQUIREMENT	4 - 6 HRS 6 - 8 HRS 4 - 6 HRS
STEP 4 SANDING (MASONRY/ WOOD/ METAL) SAND THE SURFACE WITH SAND PAPER 180 FOLLOWED BY SAND PAPER 320 AND WIPE CLEAN					
ROYALE LUXURY ENAMEL WOOD & METAL BASECOAT (WOOD/ METAL) ROYALE WALL BASECOAT (MASONRY)	0027 0027 0025	WATER	45 - 55, NO DLUTION 50 - 60	BRUSH 13 - 15 NA BRUSH 20 - 22	4 - 6 HRS
STEP 6 SANDING (MASONRY/ WOOD/ METAL) SAND THE SURFACE WITH SAND PAPER 320 AND WIPE CLEAN					
ROYALE LUXURY ENAMEL FIRST COAT ROYALE LUXURY ENAMEL BRUSH / SPRAY / ROLLER	0028	WATER	BRUSH 10 - 20 SPRAY 20 - 30	BRUSH 30 - 35 SPRAY 20 - 25	4 - 6 HRS
ROYALE LUXURY ENAMEL SECOND COAT ROYALE LUXURY ENAMEL BRUSH / SPRAY / ROLLER	0028	WATER	BRUSH 10 - 20 SPRAY 20 - 30	BRUSH 30 - 35 SPRAY 20 - 25	4 - 6 HRS

## HOW TO CHOOSE COLOURS

Browse through Asian Paints colour tools to help you find the right colour combination

COLOUR SPECTRA FAN DECK\*

ROYALE LUXURY ENAMEL SHADE CARD



\*These shades are for reference only. Please refer to the Colour Spectra or Colour Palette for correct shade reference

## ADDITIONAL INFORMATION

### VOC CONTENT



#### LOW VOC CONTENT

Asian Paints Royale Luxury Enamel not only conforms to international VOC specifications but also does not contain any hazardous raw material like lead, heavy metal, APEO (Alkylphenol Ethoxylates) and toxic materials as per the hazardous material usage guidelines laid out by the international GS-11 (Green Seal) standard.



Green Assure from Asian Paints is more than just VOC (Volatile Organic Compounds).

\*FOR MORE INFORMATION LOG ON TO [WWW.ASIANPAINTS.COM](http://WWW.ASIANPAINTS.COM)

### POST PAINTING CARE

For the best performance of the paint, ensure proper washing and cleaning of fungal growth, if any, at regular intervals of six months.

### TECHNICAL DETAILS

- a. **Drying time:** Surface dry time 30 min
- b. **Sheen levels:** 70 - 90 at 60 deg GH
- c. **Flash point IS101/1987 Part 1, Sec 6:** NA
- d. **Stability of thinned paint:** To be used within 24 hours

### PRECAUTIONS

- > Do not apply when ambient temperature is less than 10°C or if the temperature might drop to this level within 4 hours of application.
- > Do not over-thin or over-extend the brush.
- > Tint using Asian Paints machine colourants only.
- > Stir well and strain before use.
- > Tinted paints need thorough shaking immediately after tinter addition as well as before use.

### SAFETY FEATURES

- > Kindly refer to the MSDS for Asian Paints Royale Luxury Enamel which gives detailed information on safety measures while handling the paint, which is available on request.
- > Store the container with the lid tightly closed in an upright position, in a cool, dry place.
- > Keep out of reach of children and away from eatables.
- > May be harmful if swallowed. In case of ingestion seek immediate medical attention.
- > Wear eye protection during application. In case of contact with eyes, rinse immediately with plenty of water and seek medical advice.
- > In case of skin contact immediately wash skin with soap and plenty of water. Get medical attention if irritation develops or persists.
- > Do not breathe vapour or spray. It is recommended to wear suitable nose pad during sanding and surface preparation to avoid dust inhalation.
- > Do not pour leftover paint down the drain or in water courses.
- > In the event of spills, contain spillage using sand or earth.
- > No added Lead, Mercury or Chromium compounds.