

PRODUCT CODE 5611

TruCare Super Putty

Asian Paints TruCare Super Putty is a plaster putty mix providing the filling benefits of plaster as well as the smoothness of a putty.

PRODUCT BENEFITS

Excellent Filling Capacity

Fills upto 6mm in 1 coat without cracking or shrinking.

Skim Coat Application

Can be applied as a skim coat with a thickness of less than 1mm also.

Optimal Pot Life

Upto 15 minutes, resulting in requirement of only 1 labour for both mixing and application resulting in no material wastage.

Excellent Whiteness

Offers Excellent Whiteness as compared to Patra POP system.

Faster Drying

Offers 15-30% faster drying as compared to Patra POP system.

Smooth Finish

Offers smooth finish

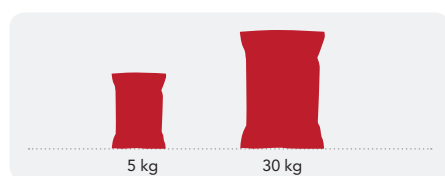


asianpaints
LEAD FREE*GUARANTEE


* All Asian Paints products contain no added Lead, Mercury, Arsenic or Chromium from April 2008.

PRODUCT FEATURES

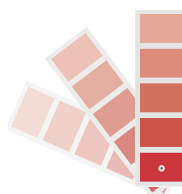
AVAILABLE PACKS



Shelf Life: 6 months from date of manufacture in original, tightly sealed sacks stored in dry and cool place.

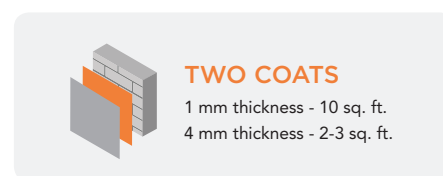
COLOURS AVAILABLE

White*



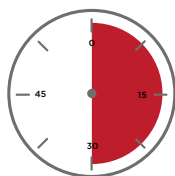
*Please note: Super Putty is an undercoat

COVERAGE



**Actual coverage may vary from the quoted coverage due to factors such as application condition, surface preparation, porosity and the filling.

DRYING TIME TO TOUCH



2-3 HOURS

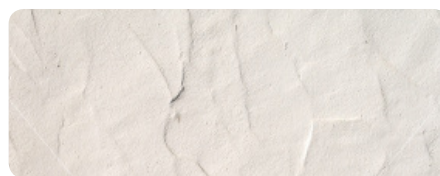
(1 mm thickness)

24 HOURS

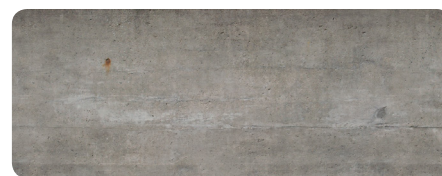
(4 mm thickness)

Note: Indicated recoating time is for primer application.

RECOMMENDED USAGE



All types of interior plasters, walls and concrete



HOW TO APPLY

PRE PAINTING STEPS






PLASTER New masonry surfaces must be allowed to cure completely for best results. It is recommended to allow 28 days as curing time for new masonry surfaces.



CLEANING Ensure that surface is completely free from all dirt, loosely held plaster, powdery residue, oil, grease or any other contamination. Any previous growth of fungus, algae or moss needs to be removed thoroughly by vigorous wire brushing and cleaning with water. One coat of SmartCare BioBlock is recommended to prevent further growth of algae, fungus or moss.

APPLICATION PROCESS

APPLICATION	CODE	THINNER	DILUTION % BY VOL	APPLICATION VISCOSITY ¹	RECOATING PERIOD
STEP 1 SANDING	SAND THE SURFACE WITH SAND PAPER 180 AND WIPE CLEAN				
STEP 2 TRUCARE SUPER PUTTY MIXING	5611	 WATER	40% - 45%	N/A	N/A
STEP 3 TRUCARE SUPER PUTTY DENT FILLING	5611	 WATER	40% - 45%	N/A	2 - 3 HRS
STEP 4 TRUCARE SUPER PUTTY LEVELLING	5611	 WATER	40% - 45%	N/A	2 - 3 HRS
STEP 5 SANDING	LIGHT SAND THE SURFACE WITH SAND PAPER 220 AND WIPE CLEAN				
STEP 6 PRIMER AND EMULSION COAT	APPLY A COAT OF PRIMER FOLLOWED BY 2-3 COATS OF EMULSION				

1. As measured through a Ford cup.

2. Recoat period is quoted for 25°C and 50% Relative Humidity, these may vary under different conditions.

ADDITIONAL INFORMATION

POST PAINTING CARE

It is important to apply a coat of Interior wall primer or Royale wall basecoat over TruCare Super Putty before application of emulsion.

TECHNICAL DETAILS

a. Drying time: Surface dry time 30 minutes

b. Recoatability: 2-3 hours

c. Flash Point: N/A

d. Stability of mixed putty: To be used within 15 minutes

PRECAUTIONS

- › Ensure the material is mixed homogenously with water and used within 15 minutes of mixing.
- › Do not sand the material vigorously with sand paper otherwise it will reduce the strength of the material.
- › Though the material is non- toxic, care should be taken to avoid dust inhalation while mixing and handling.

SAFETY FEATURES

- › Refer MSDS which gives detailed information on safety measures while handling the paint.
- › Keep out of reach of children and away from food and drinks.
- › May be harmful if swallowed. In case of ingestion seek immediate medical attention.
- › Wear eye protection during application. In case of contact with eyes, rinse immediately with plenty of water and seek medical advice.
- › In case of skin contact immediately wash skin with soap and plenty of water. Get medical attention if irritation develops or persists.
- › It is recommended to wear suitable nose pad during sanding and surface preparation to avoid dust inhalation.
- › No added Lead, Mercury or Chromium compounds.